



Labware

# TOP Offers



**-35%**

### 100% cotton

Fabric weight approx. 205 g/m<sup>2</sup>. Easy-care, boil-proof, dry cleaning possible.

Size	Women's size	Men's size	Art. No.	Pack Qty.	DKK	DKK
XXS	-	38	ELY1.1	1 unit	385,50	250,15
XS	32/34	40/42	KT03.1	1 unit	385,50	250,15
S	36/38	44/46	KT04.1	1 unit	385,50	250,15
M	40/42	48/50	KT05.1	1 unit	385,50	250,15
L	44/46	52/54	KT06.1	1 unit	385,50	250,15
XL	48/50	56/58	KT07.1	1 unit	385,50	250,15
XXL	52/54	64/66	KT08.1	1 unit	385,50	250,15
XXXL	56/58	64/66	ELY2.1	1 unit	385,50	250,15

### Made of mixed fabric of 65% polyester, 35% cotton

Fabric weight approx. 215 g/m<sup>2</sup>. Robust, suitable for industrial washing, washable up to 95 °C.

Size	Women's size	Men's size	Art. No.	Pack Qty.	DKK	DKK
XS	32/34	40/42	ELY3.1	1 unit	341,65	221,65
S	36/38	44/46	ELY4.1	1 unit	341,65	221,65
M	40/42	48/50	ELY5.1	1 unit	341,65	221,65
L	44/46	52/54	ELY6.1	1 unit	341,65	221,65
XL	48/50	56/58	ELY7.1	1 unit	341,65	221,65
XXL	52/54	60/62	ELY8.1	1 unit	341,65	221,65

## Unisex lab coat with lapel

Bierbaum-Proenen.

Concealed buttons, long sleeve, 1 breast pocket, 2 side pockets, with a slit at the back. Length 103 cm. Öko-Tex Standard 100.

Valid from 1 August to 30 September 2024

Carl Roth GmbH + Co. KG · Schoemperlenstr. 3-5 · 76185 Karlsruhe

Phone: +49 721 / 56 06 510 · Fax: +49 721 / 56 06 111 · E-Mail: info@carlroth.com · Internet: www.carlroth.com  
For ordering and information about prices and delivery in your country please contact us or your local distributor.  
Contact: www.carlroth.com/com/en/Auslandsservice · www.carlroth.com/com/en/Auslandsvertretungen  
All supplies and deliveries are subject to the terms and conditions of sale and delivery of Carl Roth GmbH + Co. KG, Karlsruhe.

### Refrigerator with circulation cooling MRFvc series

Liebherr.

**General information for all models:**

- Temperature range: +2 to +9 °C
- Mechanical control with stages
- Dynamic cooling system for fast cool-down and even cooling temperature via fans
- Automatic defrost system
- Lockable door
- Analogue thermometer in the interior

**Technical specifications:**

Art. No.	1K19.1	1K1A.1	1K1C.1
Type	MRFvc 3501	MRFvc 4001	MRFvc 5501
Cooling capacity	250 l	286 l	432 l
Number of grates	4	5	4
Outer width	597 mm		747 mm
Outer depth	654 mm		769 mm
Outer height	1,684 mm	1,884 mm	1,684 mm
Inner width	475 mm		625 mm
Inner depth	423 mm		539 mm
Inner height	1,459 mm	1,659 mm	1,459 mm
Thawing method	automatic		
Energy consumption (24 h)	1.005 kWh	1.068 kWh	1.051 kWh
Mains connection	220–240 V, 50 Hz		



**-25 %**

Delivery incl. height-adjustable grates.

Type	Art. No.	Pack Qty.	DKK	DKK
MRFvc 3501	<b>1K19.1</b>	1 unit	7.248,40	<b>5.436,00</b>
MRFvc 4001	<b>1K1A.1</b>	1 unit	8.054,65	<b>6.040,50</b>
MRFvc 5501	<b>1K1C.1</b>	1 unit	9.264,00	<b>6.947,65</b>



**-25 %**

**NEW / +**

### Laboratory fridge-freezer combination Performance SCFg 4002, explosion-proof

Liebherr.

With explosion-proof interior acc. to EU Directive 2014/34/EU ("ATEX Directive"). Classification of the interior according to <Ex> II 3 G Ex ec IIC T6 (declared as zone 22) for flammable substances in closed containers which could form explosive atmospheres.

- Adjustable cooling temperature (2 separately adjustable refrigeration circuits)
  - Fridge unit: +3 to +16 °C
  - Freezer unit: -9 to -30 °C
- Fridge unit with recirculated-air ventilation, freezer unit with static cooling
- Digital temperature display
  - Fridge unit resolution: 0.1 °C
  - Freezer unit resolution: 0.1 °C (to -19.9 °C) or 1 °C (from -20 °C)
- Temperature consistency
  - Fridge unit: ±3 K
  - Freezer unit: ±5 K
- Memory for min./max. temperatures, recording duration 999 h or 42 d. With the option to reset the time and min./max. temperature for a new recording (after checking the temperatures)
- Feedthrough for external sensors (Ø 10 mm)
- With lockable door

**Technical specifications:**

Art. No.	260E.1
Type	SCFg 4002, explosion-proof
Fridge unit cooling capacity	199 l
Freezer unit cooling capacity	62 l
Removable shelves in the fridge unit	glass stage
Removable shelves in the freezer unit	drawer
Inner fridge unit width	460 mm
Inner fridge unit depth	422 mm
Inner fridge unit height	1,037 mm
Inner freezer unit width	406 mm
Inner freezer unit depth	292 mm
Inner freezer unit height	614 mm
Outer width	597 mm
Outer depth	654 mm
Outer height	2,044 mm
Thawing method	automatic cooling compartment, manual freezer compartment
Energy consumption (24 h)	0.951 kWh
Mains connection	230–240 V, 50 Hz

Delivery incl. 4 glass shelves for the fridge unit and 3 drawers.

Art. No.	Pack Qty.	DKK	DKK
<b>260E.1</b>	1 unit	23.292,75	<b>17.529,75</b>



**NEW / +**

### Analytical balance ACS/ACJ series

KERN.

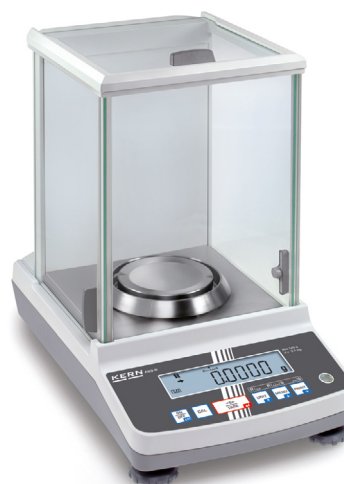
**Application:**

- Item counting, percentage weighing and batching

**Features:**

- ACS models have external adjustment
- ACJ models have internal automatic adjustment, either after a change of temperature >2 °C or time-controlled every four hours
- Single-cell weighing system
- Stainless steel weighing plate
- Dimensions of entire balance incl. draft shield: W 213 x D 333 x H 328 mm
- Weighing space dimensions (W x D x H): 174 x 162 x 227 mm

**Delivery incl.** protective hood.



**-25%**

**ACS series, external adjustment**

Type	Weighing range (g)	Readability (g)	Linearity (g)	Reproducibility (g)	Weighing pan (mm)	Art. No.	Pack Qty.	DKK	DKK
ACS 80-4	82	0.0001	±0,0003	0,0002	Ø 91	263P.1	1 unit	9.225,00	6.918,75
ACS 100-4	120	0.0001	±0,0003	0,0002	Ø 91	263T.1	1 unit	9.975,00	7.481,25
ACS 200-4	220	0.0001	±0,0003	0,0002	Ø 91	263X.1	1 unit	10.725,00	8.043,75
ACS 300-4	320	0.0001	±0,0003	0,0002	Ø 91	263Y.1	1 unit	12.225,00	9.168,75

**ACJ series, internal adjustment**

Type	Weighing range (g)	Readability (g)	Linearity (g)	Reproducibility (g)	Weighing pan (mm)	Art. No.	Pack Qty.	DKK	DKK
ACJ 80-4	82	0.0001	±0,0003	0,0002	Ø 91	264A.1	1 unit	10.275,00	7.702,50
ACJ 100-4	120	0.0001	±0,0003	0,0002	Ø 91	264C.1	1 unit	10.725,00	8.043,75
ACJ 200-4	220	0.0001	±0,0003	0,0002	Ø 91	264E.1	1 unit	11.475,00	8.606,25
ACJ 300-4	320	0.0001	±0,0003	0,0002	Ø 91	264H.1	1 unit	12.975,00	9.731,25

### Analytical balances HR series

A & D.

**Application:**

- Percent, counting, animal weighing

**Features:**

- HR-A model with external calibration
- HR-AZ models with internal calibration
- Removable, round full-sized draft shield (internal height 198 mm); (W) = incl. draft shield
- The sliding doors of the draft shield tilt back to minimise space requirements
- Solid metal housing
- Four-year warranty

**Delivery incl.** mains adapter.



**-25%**

**Models with external calibration**

Type	Weighing range (g)	Readability (g)	Linearity (g)	Reproducibility (g)	Weighing pan (mm)	Art. No.	Pack Qty.	DKK	DKK
HR-251A	62 / 252	0,0001 / 0,001	±0,0003 / 0,001	±0,0001 / 0,001	Ø 90	CTE2.1	1 unit	9.449,25	7.086,75
HR-100A	102	0,0001	±0,0002	±0,0001	Ø 90	CTE3.1	1 unit	9.449,25	7.086,75
HR-150A	152	0,0001	±0,0002	±0,0001	Ø 90	CTE4.1	1 unit	10.312,15	7.733,65
HR-250A	252	0,0001	±0,0003	±0,0002	Ø 90	CTE5.1	1 unit	12.102,00	9.076,15

**Models with internal calibration**

Type	Weighing range (g)	Readability (g)	Linearity (g)	Reproducibility (g)	Weighing pan (mm)	Art. No.	Pack Qty.	DKK	DKK
HR-251AZ (W)	62 / 252	0,0001 / 0,001	±0,0003/0,001	±0,0001/0,001	Ø 90	CTE6.1	1 unit	11.529,40	8.646,75
HR-100AZ (W)	102	0,0001	±0,0002	±0,0001	Ø 90	CTE7.1	1 unit	11.481,00	8.610,75
HR-150AZ (W)	152	0,0001	±0,0002	±0,0001	Ø 90	CTE8.1	1 unit	12.061,50	9.046,15
HR-250AZ (W)	252	0,0001	±0,0003	±0,0002	Ø 90	CTE9.1	1 unit	14.480,25	10.860,00

**-25%**

### Volumetric flasks with glass stopper, class A

Hirschmann. Material: DURAN® glass.

Certificate of conformity with batch identification. Calibrated to IN. With standard ground glass joint. Acc. to DIN EN ISO 1042.

Delivery incl. hollow glass stopper.

#### Clear glass

Blue graduations.

Vol. (ml)	Tolerance (ml)	Standard ground glass joint	Height (mm)	Art. No.	Pack Qty.	DKK	DKK
5	±0,025	7/16	70	CNY0.1	2 units	352,50	264,00
5	±0,040	10/19	70	CNY1.1	2 units	346,50	259,50
10	±0,025	7/16	90	CNY2.1	2 units	346,50	259,50
10	±0,040	10/19	90	CNY3.1	2 units	346,50	259,50
20	±0,040	10/19	110	CNY4.1	2 units	345,75	258,75
20	±0,060	12/21	105	CNY5.1	2 units	395,65	296,25
25	±0,040	10/19	110	CNY6.1	2 units	345,75	258,75
25	±0,060	12/21	110	CNY7.1	2 units	340,15	254,65
50	±0,060	12/21	140	CNY8.1	2 units	338,25	253,50
50	±0,080	14/23	140	CNY9.1	2 units	352,50	264,00
100	±0,100	12/21	170	CPA0.1	2 units	352,50	264,00
100	±0,100	14/23	170	CPA1.1	2 units	339,75	254,25
200	±0,150	14/23	210	CPA2.1	2 units	460,90	345,40
250	±0,150	14/23	220	CPA3.1	2 units	486,40	364,15
500	±0,250	19/26	260	CPA4.1	2 units	592,90	444,00
1,000	±0,600	19/32	300	CPA5.1	1 unit	545,65	408,75
1,000	±0,400	24/29	300	CPA6.1	1 unit	469,15	351,40
2,000	±0,600	29/32	370	CPA7.1	1 unit	666,40	499,50
5,000	±1,200	34/35	470	CPA8.1	1 unit	1.489,50	1.112,65
10,000	±2,000	45/40	570	CPA9.1	1 unit	2.797,90	2.098,15



#### Brown glass

White graduations.

Vol. (ml)	Tolerance (ml)	Standard ground glass joint	Height (mm)	Art. No.	Pack Qty.	DKK	DKK
5	±0,025	7/16	70	CPC9.1	2 units	725,65	544,15
5	±0,040	10/19	70	CPE0.1	2 units	615,00	460,50
10	±0,025	7/16	90	CPE1.1	2 units	725,65	544,15
10	±0,040	10/19	90	CPE2.1	2 units	615,00	460,50
20	±0,040	10/19	110	CPE3.1	2 units	615,00	460,50
20	±0,040	12/21	110	CPE4.1	2 units	615,00	460,50
25	±0,040	10/19	110	CPE5.1	2 units	615,00	460,50
25	±0,060	12/21	110	CPE6.1	2 units	615,00	460,50
50	±0,060	12/21	140	CPE7.1	2 units	618,40	463,50
50	±0,080	14/23	140	CPE8.1	2 units	619,15	463,90
100	±0,100	12/21	170	CPE9.1	2 units	631,90	473,65
100	±0,100	14/23	170	CPH0.1	2 units	619,90	464,25
200	±0,150	14/23	210	CPH1.1	2 units	710,65	532,50
250	±0,150	14/23	220	CPH2.1	2 units	783,00	586,90
500	±0,250	19/26	260	CPH3.1	2 units	1.005,00	753,40
1,000	±0,400	24/26	300	CPH4.1	1 unit	710,65	532,50
2,000	±0,600	29/32	370	CPH5.1	1 unit	1.098,00	823,15



**-20%**



### Crystallizing dishes DURAN®

DWK Life Sciences. Material: DURAN® glass. Autoclavable: yes.

#### With spout

Acc. to DIN 12338.

Vol. (ml)	Ø ext. (mm)	Height (mm)	Art. No.	Pack Qty.	DKK	DKK
20	40	25	C091.1	10 units	656,65	525,00
40	50	30	C092.1	10 units	661,50	529,15
60	60	35	C093.1	10 units	685,50	548,25
100	70	40	C094.1	10 units	758,65	606,75
150	80	45	C095.1	10 units	840,75	672,40
300	95	55	C096.1	10 units	893,25	714,40
500	115	65	C097.1	1 unit	138,00	110,25
900	140	75	C098.1	1 unit	203,65	162,75
2,000	190	90	HX07.1	1 unit	497,25	397,50
3,500	230	100	HX08.1	1 unit	717,00	573,40

#### Without spout

Acc. to DIN 12337.

Vol. (ml)	Ø ext. (mm)	Height (mm)	Art. No.	Pack Qty.	DKK	DKK
20	40	25	HX09.1	10 units	656,65	525,00
40	50	30	HX10.1	10 units	661,50	529,15
60	60	35	HX11.1	10 units	685,50	548,25
100	70	40	HX12.1	10 units	758,65	606,75
150	80	45	HX13.1	10 units	840,75	672,40
300	95	55	HX14.1	10 units	893,25	714,40
500	115	65	HX15.1	1 unit	138,00	110,25
900	140	75	HX16.1	1 unit	195,00	156,00
2,000	190	90	HX17.1	1 unit	497,25	397,50
3,500	230	100	HX18.1	1 unit	717,00	573,40





**-25 %**



**NEW/+**

**Narrow mouth bottle 308/310 with UN approval**

Kautex. Material: HDPE.

Leak-proof with square cross-section. 45 GL thread, neck interior Ø of 27.8 mm. **With UN approval for liquids.**

Suitable for sampling, as well as for storing and transporting liquids. Bottles are supplied with a dust cap to prevent contamination before filling. Remove this cap before sealing the bottles. **Suitable for foodstuffs.**

**Delivery incl.** dust cap, **without** screw-cap closure, please order separately.

**Natural colours**

Vol. (ml)	Width (mm)	Depth (mm)	Height (mm)	Ø inner neck (mm)	Thread	UN approval	Version	Art. No.	Pack Qty.	DKK	DKK
500	77	77	176.5	27.8	GL 45	1H1/X1.9/250	without handle	<b>256A.1</b>	120 units	1.870,50	<b>1.402,90</b>
1,000	96	96	211.8	27.8	GL 45	3H1/X1.9/250	without handle	<b>256E.1</b>	64 units	1.986,75	<b>1.039,90</b>
2,500	127	127	282	27.8	GL 45	3H1/X1.9/250	small handle, recessed label space	<b>256K.1</b>	26 units	1.199,25	<b>894,75</b>
2,500	127	127	294	27.8	GL 45	3H1/X1.9/250	large handle	<b>256N.1</b>	25 units	1.279,90	<b>955,15</b>

**Black**

Vol. (ml)	Width (mm)	Depth (mm)	Height (mm)	Ø inner neck (mm)	Thread	UN approval	Version	Art. No.	Pack Qty.	DKK	DKK
500	77	77	176.5	27.8	GL 45	1H1/X1.9/250	without handle	<b>256C.1</b>	120 units	2.160,75	<b>1.620,40</b>
1,000	96	96	211.8	27.8	GL 45	3H1/X1.9/250	without handle	<b>256H.1</b>	64 units	1.669,15	<b>1.251,40</b>
2,500	127	127	282	27.8	GL 45	3H1/X1.9/250	small handle, recessed label space	<b>256L.1</b>	26 units	1.435,15	<b>1.076,25</b>
2,500	127	127	294	27.8	GL 45	3H1/X1.9/250	large handle	<b>256P.1</b>	25 units	1.524,00	<b>1.142,65</b>



**-25 %**

**Accessories for series 308/310 narrow mouth bottle**

Kautex.

**Tamper-evident lightweight cap**

Material: HDPE. With tamper-evident band and PTFE insert. **Suitable for foodstuffs.**

Thread	Art. No.	Pack Qty.	DKK	DKK
GL 45	<b>2578.1</b>	10 units	99,75	<b>67,50</b>

**Tamper-evident bell cap**

Material: PP. With red tamper-evident band, cup gasket and PTFE insert. **Suitable for foodstuffs.**

Thread	Art. No.	Pack Qty.	DKK	DKK
GL 45	<b>2579.1</b>	10 units	144,00	<b>107,65</b>

**Degassing closure**

Material: PP. With tamper-evident band, cup gasket and PTFE insert.

Thread	Art. No.	Pack Qty.	DKK	DKK
GL 45	<b>257A.1</b>	10 units	230,25	<b>172,50</b>

### Combi hand-held measuring device MultiLine®

WTW.

- Robust, waterproof housing
- Display unit with universal measuring channels to measure pH, redox, conductivity, dissolved oxygen and turbidity
- All WTW IDS sensors are connectable. IDS sensors convert measurement signals into digital signals and operate accurately and interference-free
- Automatic recognition of IDS sensors. Sensor ID (sensor name and serial number), calibration data and measurement settings are stored in the sensor head and transferred to the pH meter; this allows operation on different measuring devices without recalibration
- GLP-supporting documentation: documentation of device and sensor data; user administration via MultiLab® User
- Waterproof Mini USB-B interface for data transfer to PC with MultiLab® Importer

**Optional accessories (please order separately):**

- Radio equipment for cordless measuring
- IDS sensors for different parameters

#### Multi 3510 IDS with one measuring channel

Perfect entry-level device for digital IDS multi-parameter measurement.

- Easy-to-read, backlit b/w graphic display

**Delivery incl.** buffer solutions (pH 4 / 7; EC 1413 µS/cm), software, USB cable, carrying case and batteries.

Type	Sensor	Art. No.	Pack Qty.	DKK	DKK
Multi 3510 IDS basic	none	206K.1	1 unit	7.925,65	6.736,50
Multi 3510 IDS set 1	SenTix® 940 (pH)	206L.1	1 unit	10.174,90	8.648,65
Multi 3510 IDS set 3	TetraCon® 925 (EC)	206N.1	1 unit	12.642,00	10.745,65
Multi 3510 IDS set 4	FDO® 925 (O <sub>2</sub> )	206P.1	1 unit	15.439,90	13.117,50

#### Multi 3620 IDS with two measuring channels

Professional 2-channel measuring device for digital IDS multi-parameter measurement.

- Brilliant colour graphics display
- Interference-proof due to two galvanically isolated, universal sensor inputs
- Additionally with USB-A interface to connect a memory stick or printer

**Delivery incl.** buffer solutions (pH 4 / 7; EC 1413 µS/cm), protective armouring SM Pro, software, USB cable, carrying case, power supply unit and batteries.

Type	Sensor	Art. No.	Pack Qty.	DKK	DKK
Multi 3620 IDS basic	none	206T.1	1 unit	12.247,15	10.409,65
Multi 3620 IDS set C	SenTix® 940 (pH), TetraCon® 925 (EC)	206X.1*	1 unit	18.785,65	15.963,75

\* For additional product data and safety information, see carlroth.com.

**Technical specifications:**

Art. No.	206K.1	206L.1	206N.1	206P.1	206T.1	206X.1	206Y.1	207A.1
Type	Multi 3510 IDS basic	Multi 3510 IDS set 1	Multi 3510 IDS set 3	Multi 3510 IDS set 4	Multi 3620 IDS basic	Multi 3620 IDS set C	Multi 3630 IDS basic	Multi 3630 IDS set F
Parameters	pH, redox, conductivity, salinity, TDS, oxygen, turbidity, temperature							
Channels	1				2		3	
Sensor	none	SenTix® 940 (pH)	TetraCon® 925 (EC)	FDO® 925 (O <sub>2</sub> )	none	SenTix® 940 (pH), TetraCon® 925 (EC)	none	SenTix® 940 (pH), TetraCon® 925 (EC), FDO® 925 (O <sub>2</sub> )
Reference temp. conductivity	+20 / +25 °C							
Calibration points	1/2/3/4/5 (pH), 1 (EC)							
Data memory	500 data sets (manual), 4,500 data sets (automatic)				500 data sets (manual), 10,000 data sets (automatic)			
Port	mini USB-B (PC)				mini USB-B (PC), USB-A (memory stick, printer)			
Connection	specific (4-pole)							
IP rating	67							
L x W x H	180 x 80 x 55 mm							
Weight	400 g							
Power supply	4x 1.5 V AA batteries				4x 1.2 V AA batteries, power supply unit			



**-15%**

#### Multi 3630 IDS with three measuring channels

Professional 3-channel measuring device for digital IDS multi-parameter measurement.

- Brilliant colour graphics display
- Interference-proof due to three galvanically isolated, universal sensor inputs
- Additionally with USB-A interface to connect a memory stick or printer

**Delivery incl.** buffer solutions (pH 4 / 7; EC 1413 µS/cm), protective armouring SM Pro, software, USB cable, carrying case, power supply unit and batteries.

Type	Sensor	Art. No.	Pack Qty.	DKK	DKK
Multi 3630 IDS basic	none	206Y.1	1 unit	20.220,75	17.187,40
Multi 3630 IDS set F	SenTix® 940 (pH), TetraCon® 925 (EC), FDO® 925 (O <sub>2</sub> )	207A.1*	1 unit	34.443,00	29.266,90

\* For additional product data and safety information, see carlroth.com.



**-20%**



### Portable pH meters pH 7 Vio

Dostmann.

- Large screen with simultaneous display of pH or mV value and temperature
- Automatic or manual temperature compensation
- Confirmation when a stable measured value is reached
- Automatic or manual calibration
- Can be manually calibrated with two user-defined buffer solutions
- Storage of current calibration and display of the electrode status
- Automatic switch-off after 20 min

201T pH single-rod measuring cell with integrated temperature gauge: for common aqueous samples.

pH range: 0 to 14. Operating temperature: 0 to +60 °C.

Ceramic diaphragms, gel electrolyte, plastic shaft.

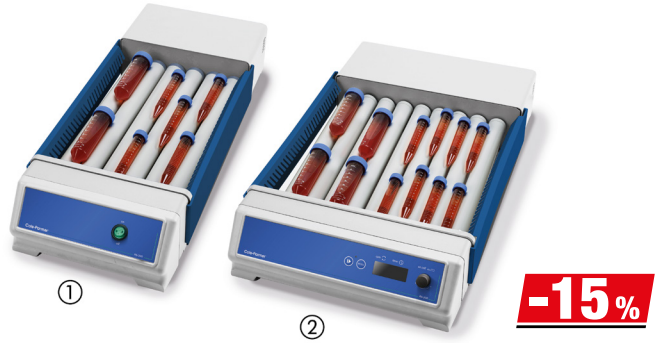
Shaft length/Ø: 120/12 mm.

**Delivery incl.** 201T pH single-rod measuring cell, buffer solutions (pH 4.01 and 7.00, each 75 ml), storage solution (35 ml), empty container for water, 100 ml measuring beaker, transport case and batteries.

Art. No.	Pack Qty.	DKK	DKK
HAH0.1	1 unit	2.862,40	2.289,75

### Technical specifications:

Art. No.	HAH0.1
Type	pH 7 Vio, set 1
Sensor	201T
Parameters	pH, redox, temperature
pH measuring range	0 to 14
pH resolution	0,01
pH accuracy	±0.01
Voltage measuring range	-1000 to +1000 mV
Voltage resolution	1 mV
Voltage accuracy	±1 mV
Temperature measuring range	0 to +100 °C
Temperature resolution	0.1 °C
Temperature accuracy	±0.5 °C
Temperature sensor	NTC 30 kΩ
Calibration points	1/2/3 (pH)
Calibration memory	current calibration
Connection	BNC (pH), Cinch (°C)
L x W x H	196 x 86 x 33 mm
Power supply	3 x 1.5 V AA batteries



**NEW/+** **A**uto-clavable

**Accessories extension attachment for tilt/roller mixer**

Heathrow Scientific. Material: PP. Autoclavable: yes.

To expand the capacity of a tilt/roller mixer. 10 tubes can be attached to each extension attachment. Depending on the roller mixer and the use of extension attachments, this doubles or triples the maximum tube capacity.

**Extension attachment, large model**

- Suitable for 10 standard, blood or centrifuge tubes with flat and conical bases with Ø 17 to 20 mm (clips 15 mm Ø)
- Dimensions: attachment Ø 65 mm, L 279 mm

Art. No.	Pack Qty.	DKK	DKK
263L.1	3 units	580,50	435,40

**Extension attachment, small model**

- Suitable for 10 culture and urine test tubes with flat and conical bases with Ø 10 to 16 mm (clips, 12 mm Ø)
- Dimensions: attachment Ø 65 mm, L 239 mm

Art. No.	Pack Qty.	DKK	DKK
263N.1	3 units	580,50	435,40

**Tilt/roller mixer RS-200 series**

Stuart/Cole-Parmer.

Thorough mixing results due to simultaneous roll/tilt motion.

- With collecting tray
- Removable side panels prevent tubes from falling out accidentally during operation

Two model variants with different number of rollers and speed available.

**Technical specifications:**

Art. No.	HA30.1	HA31.1	HA32.1	HA33.1
Type	RS-200	RS-200-L	RS-200D	RS-200D-L
Number of rollers	6	9	6	9
Speed range	5 to 60 rpm			
Speed	33 rpm			
Speed display	digital			
Shaking amplitude (stroke)	16 mm			
Timer	1 s to 90 min or 1 min to 9 h			
Roller length	340 mm			
W x D x H (mm)	565 x 240 x 110	565 x 360 x 110	565 x 240 x 110	565 x 360 x 110
Mains connection	230 V, 50 Hz			

**Models standard**

With fixed speed of 33 rpm.

Pic.	Type	Art. No.	Pack Qty.	DKK	DKK
(1)	RS-200	HA30.1	1 unit	8.828,65	7.504,15
	RS-200-L	HA31.1	1 unit	10.715,25	9.102,40

**Digital models**

With variable speed control from 5 to 60 rpm, digital speed display and timer function.

Pic.	Type	Art. No.	Pack Qty.	DKK	DKK
	RS-200D	HA32.1	1 unit	11.634,40	9.884,65
(2)	RS-200D-L	HA33.1	1 unit	13.488,75	11.464,90



**Rotator tube revolver for sample tubes**

Thermo.

For mixing samples in test tubes.

- With LED speed display
- Turntable can be positioned at any angle (exception: turntable for 50 ml centrifuge tubes can only be positioned horizontally or vertically)
- Max. 4 turntables can be attached at once (exception: only 1 turntable can be attached for 50 ml centrifuge tubes)

**Technical specifications:**

Art. No.	ATX1.1
Type	tube revolver
Speed range	10 to 40 rpm
W x D x H, external	225 x 154 x 195 mm
Mains connection	100-240 V, 50/60 Hz

**Delivery incl.** 2 turntables for 7 centrifuge tubes 15 ml, 2 turntables for 7 blood collection tubes 5/7 ml, 2 turntables for 15 reaction vials 1.5/2.0 ml, 2 turntables for 21 reaction vials 0.5/0.8 ml and 1 turntable for 6 centrifuge tubes 50 ml.

Art. No.	Pack Qty.	DKK	DKK
ATX1.1	1 unit	3.457,50	2.766,00





**-20%**

**Rotator RS-RD 5**

Phoenix Instrument.

For soft and gentle mixing of samples in various tubes/vials.

- Analogue variable speed adjustment
- Fixed 90° rotation angle
- Max. loading options:  
48 reaction vials 1.5/2.0 ml  
8 centrifuge tubes 15 ml  
8 centrifuge tubes 50 ml

**Delivery incl.** 36 clips (12 clips each for reaction tubes 1.5/2.0 ml and 12 clips each for centrifuge tubes 15/50 ml).

Art. No.	Pack Qty.	DKK	DKK
CHA0.1	1 unit	4.233,00	3.386,25

**Technical specifications:**

Art. No.	CHA0.1
Type	RS-RD 5
Speed range	0 to 80 rpm
W x D x H, external	220 x 300 x 310 mm
Mains connection	100–240 V, 50/60 Hz

**Accessories fastening clip for rotator RS-RR 5**

Phoenix Instrument.

Designation	Art. No.	Pack Qty.	DKK	DKK
Reaction vessels 1,5/2,0 ml (Ø 11 mm)	CHA1.1	12 units	184,90	147,40
Centrifuge tubes 15 ml (Ø 17 mm)	CHA2.1	12 units	184,90	147,40
Centrifuge tubes 50 ml (Ø 29 mm)	CHA3.1	12 units	184,90	147,40



**-18%**



### HPLC screw cap b.safe GL 45

Bohlender. Material: PPS, PTFE, PFA. Autoclavable: yes.

Screw cap for GL 45 bottle thread made of PPS with freely rotating distributor body made of PTFE, selectable with two, three or four connections. Connections with UNF 1/4" 28G inner thread for connecting PFA-fittings for hoses (external diameter 3.2 mm), PFA dummy stoppers for the closure of unnecessary connections or a venting valve with change indicator. Temperature resistance: -20 to +200 °C.

- For removing solvents for HPLC
- Freely rotating distributor bodies, prevents the hoses twisting when replacing the bottle
- Using the fittings, hoses can be introduced up to the base of the bottle; conical nipple clamps the hose and seals reliably at the connection
- The venting valve is specially adapted to the flow rates in HPLC; integrated non-return valve prevents the evaporation of solvents and lets ambient air flow into the bottle in the event of a vacuum. The upstream membrane made of porous PTFE effectively keeps out dirt particles and other contaminations from outside
- Venting valve with change indicator after activation at the press of a button and with labelling area

#### With two connections

**Delivery incl.** 1 x fitting (PFA) and 1 x venting valve with change indicator.

For hoses with outer Ø (mm)	Thread	Art. No.	Pack Qty.	DKK	DKK
3.2	UNF 1/4" G28	<b>1HPC.1</b>	1 unit	527,65	<b>432,00</b>

#### With three connections

**Delivery incl.** 2 x fittings (PFA), 1 x dummy stopper (PFA) and 1 x venting valve with change indicator.

For hoses with outer Ø (mm)	Thread	Art. No.	Pack Qty.	DKK	DKK
3.2	UNF 1/4" G28	<b>1HPA.1</b>	1 unit	594,40	<b>486,75</b>

#### With four connections

**Delivery incl.** 3 x fittings (PFA), 2 x dummy stoppers (PFA) and 1 x venting valve with change indicator.

For hoses with outer Ø (mm)	Thread	Art. No.	Pack Qty.	DKK	DKK
3.2	UNF 1/4" G28	<b>1HP9.1</b>	1 unit	616,90	<b>505,50</b>



**-18%**

### Desiccator Star

Bohlender. Material: PMMA, aluminium.

Panels made of transparent PMMA, frame made of reinforced aluminium. All-round rubber door seal with magnetic strip. For drying and safe storage of moisture-sensitive products (e.g. reference solutions, retained samples, metallographic samples, tobacco leaves, DNA samples, etc.). Integrated digital thermal hygrometer with min./max. function for monitoring current temperature and moisture levels.

#### Technical specifications:

Art. No.	CT04.1	NX18.1
Type	Star	Star Horizontal
Total volume	45 l	
Usable volume	40 l	42 l
Inner width	260 mm	480 mm
Inner depth	330 mm	
Inner height	480 mm	260 mm
Temperature stability from	-20 °C	
Temperature stability up to	+70 °C	
Max. number of shelves	26 unit(s)	13 unit(s)
Max. all-over load per shelf	10 kg	1.5 kg
Total all-over load	30 kg	
Weight	7 kg	

**Delivery incl.** four (or two with Star Horizontal desiccator) adjustable intermediate shelves made of PMMA and 1 bottom pan for desiccants.

Type	Outer width (mm)	Outer depth (mm)	Outer height (mm)	Art. No.	Pack Qty.	DKK	DKK
Star	310	375	525	<b>CT04.1</b>	1 unit	<del>7.353,00</del>	<b>6.028,90</b>
Star Horizontal	525	375	340	<b>NX18.1</b>	1 unit	<del>9.828,40</del>	<b>8.054,25</b>



**-25%**

### Dispenser pump bottle

Semadeni. Material: PP.

Lid with flap closure and with a plate on the pump stem for dosing small quantities of liquid such as alcohol. Suitable for moistening cotton pads and wipes.

Not a medical device / Not an IVD product.

Vol. (ml)	Ø (mm)	Height (mm)	Art. No.	Pack Qty.	DKK	DKK
150	57	103	<b>1P15.1</b>	1 unit	58,15	<b>43,50</b>



### Wide mouth bottle square

Material: soda-lime glass.

Temperature stability up to +100 °C.

Delivery without screw cap, please order separately.

#### Clear glass

Vol. (ml)	Width (mm)	Depth (mm)	Height (mm)	Thread	Art. No.	Pack Qty.	DKK	DKK
100	49	49	111	32, short form	EEN3.1	10 units	228,40	171,00
250	64	64	146	45, short form	EEN4.1	10 units	429,75	317,65
500	76	76	173	54, short form	EEN5.1	10 units	519,40	389,25

#### Brown glass

Vol. (ml)	Width (mm)	Depth (mm)	Height (mm)	Thread	Art. No.	Pack Qty.	DKK	DKK
100	49	49	111	32, short form	EEN7.1	10 units	214,15	160,15
250	64	64	146	45, short form	EEN8.1	10 units	370,90	277,90
500	76	76	173	54, short form	EEN9.1	10 units	404,65	303,00
1,000	97	97	213	54, short form	EEP0.1	10 units	456,40	342,00

### Accessories tamper-evident screw caps for wide mouth bottle, square

DWK Life Sciences. Material: PP.

Colour: blue.

Thread	Ø (mm)	Height (mm)	Art. No.	Pack Qty.	DKK	DKK
32, short form	44	23	EEP1.1	10 units	94,90	70,90
45, short form	58	27	EEP2.1	10 units	124,90	93,40
54, short form	69	29	EEP3.1	10 units	150,40	112,50
60, short form	78	29	EEP4.1	10 units	124,90	93,40



**-25 %**

**Infrared thermometer Scantemp 385**

Dostmann.

For non-contact surface temperature measurement.

**With spot laser for marking the measurement zone.** Backlit display. Lock function for continuous operation.

**Technical specifications:**

Art. No.	LY46.1
Type	Scantemp 385
Parameters	temperature
Infrared measuring range	-35 to +365 °C
Temperature resolution	0.1 °C (-35 to +199.9 °C), 1.0 °C (outside)
Temperature accuracy	±2 °C or ±2% (largest value applies)
Measuring distance : measuring spot ratio	12 : 1
Emissivity	0,95 / 0,70
W x D x H	64 x 34 x 167 mm
Weight	150 g
Power supply	2x battery Micro/AAA 1.5 V

**Delivery incl. batteries.**

Art. No.	Pack Qty.	DKK	DKK
LY46.1	1 unit	492,49	<b>301,50</b>

①



**-15 %**



②



③



**Wireless data logger**

Testo.

Modern solution for temperature measurement and monitoring in storage, cold-storage and work rooms.

- Data transfer via WiFi
- Online data storage directly to cloud
- Measured values can be retrieved and evaluated via Internet-compatible smartphones, tablets or PCs
- Logger configuration via the testo basic cloud (free access), no software installation required
- An e-mail alert is generated if limits are exceeded

**Technical specifications:**

Art. No.	ECK0.1	1H1X.1	1H1Y.1
Type	Saveris 2-T1	Saveris 2-T2 set	Saveris 2-H1
Parameters	temperature	temperature, humidity	temperature, humidity
Temperature measuring range	-30 to +50 °C	-50 to +150 °C	-30 to +50 °C
Int. temperature measuring range	-30 to +50 °C		-30 to +50 °C
Ext. temp. measuring range		-50 to +150 °C	
Temperature resolution	0,1 °C		
Temperature accuracy	±0.5 °C		
Rel. humidity measuring range			0 to 100 %
Rel. humidity resolution			0,1 %
Rel. humidity accuracy			±2%
Display	yes		
Data memory	10,000 per channel		
Measuring cycle	15 min – 24 h		
Port	WiFi		
IP rating	65	65	30
Reports	manual (.pdf/.csv)		
L x W x D	95 x 75 x 30.5 mm		115 x 83 x 31 mm
Weight	240 g		250 g
Power supply	4x battery Mignon/AA 1.5 V		

**(1) Saveris 2-T1**

With integrated NTC temperature sensor.

**Delivery incl.** basic cloud access, micro USB cable, wall mount with lock, calibration protocol and batteries.

Art. No.	Pack Qty.	DKK	DKK
ECK0.1	1 unit	1.267,59	<b>1.077,40</b>

**(2) Saveris 2-T2 set**

For temperature monitoring in fridges and freezers: safe and convenient.

- With 2 external NTC temperature sensors
- Special ribbon cables prevent damage to door seals
- Included vials can be filled with glycol. If the sensors are immersed, they act as a temperature limiter and compensate for brief temperature fluctuations

**Delivery incl.** 2x NTC temperature sensors, 2x vials, basic cloud access, micro USB cable, wall mount with lock, calibration protocol and batteries.

Art. No.	Pack Qty.	DKK	DKK
1H1X.1	1 unit	3.075,00	<b>2.613,75</b>

**(3) Saveris 2-H1**

With integrated temperature and humidity sensor.

**Delivery incl.** basic cloud access, micro USB cable, wall mount with lock, calibration protocol and batteries.

Art. No.	Pack Qty.	DKK	DKK
1H1Y.1	1 unit	2.527,59	<b>2.148,40</b>





**-20%**



### Piston vacuum pump ROTILABO® CR-KP292

ROTH SELECTION.

Compact pump for vacuum and pressure applications.  
Suitable for pumping air and neutral gases.

#### Application:

Pressure filtration of aqueous solutions, use in vacuum ovens,  
vacuum drying and gas sampling.

Art. No.	Pack Qty.	DKK	DKK
CYA9.1	1 unit	2.685,00	2.147,65

#### Technical specifications:

Art. No.	CYA9.1
Type	CR-KP292
Suction capacity (l/min)	9.0
Suction capacity (m <sup>3</sup> /h)	0.6
End vacuum (abs.)	292 mbar
Overpressure	3,3 bar
Media temperature	+10 – +60 °C
Connection	for hose inner Ø 6 mm
Motor power	25 W
Ambient temperature	+10 – +40 °C
W x D x H	114 x 194 x 191 mm
Weight	2 kg
Mains connection	230 V, 50 Hz

**Auto**  
clavable

### Pipette tips ROTILABO®

ROTH SELECTION. Material: PP. Autoclavable: yes.

- Made of non-cytotoxic, biologically inert and highly transparent polypropylene
- Production under strictly controlled clean room conditions
- Extra smooth inner surface
- Graduation for quick and convenient visual volume testing
- Universal fit to many popular pipette brands, simple and effortless ejection
- Special design prevents DNA denaturation
- **Free from RNase/DNase and human DNA**
- **Pyrogen and PCR-inhibitor free**
- **Non-metallic**

Not a medical device / Not an IVD product.

#### 10 µl

Graduation at 2 and 10 µl, for quick volume control. Suitable for: Sartorius, BRAND, Eppendorf, Finnpipette®, Gilson, Rainin®, ROTH.

Volume (µl)	Version	Colour	Sterility	Packaging type	Pack.	Art. No.	Pack Qty.	DKK	DKK
0.1 to 10	Standard	colourless	Non-sterile	bag	loose	<b>1EK4.1</b>	1,000 units	66,00	<b>47,25</b>

#### 200 µl

Graduation at 10, 50 and 200 µl, for quick volume control. Suitable for: Sartorius, BRAND, Eppendorf, Finnpipette®, Gilson, ROTH.

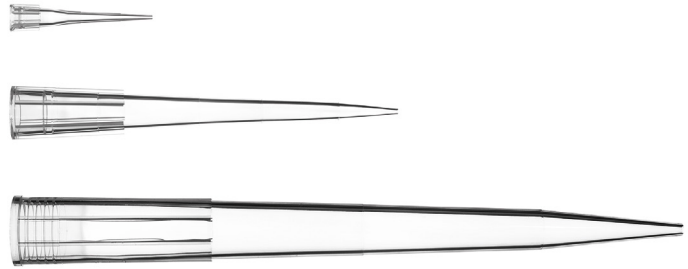
Volume (µl)	Version	Colour	Sterility	Packaging type	Pack.	Art. No.	Pack Qty.	DKK	DKK
20 to 200	Standard	colourless	Non-sterile	bag	loose	<b>1EKA.1</b>	1,000 units	45,75	<b>36,00</b>

#### 1000 µl

Graduation at 100, 500 and 1000 µl, for quick volume control. Suitable for: Sartorius, BRAND, Eppendorf, Finnpipette®, Gilson, Rainin®, ROTH.

Volume (µl)	Version	Colour	Sterility	Packaging type	Pack.	Art. No.	Pack Qty.	DKK	DKK
100 to 1000	Standard	colourless	Non-sterile	bag	loose	<b>1EKK.2</b>	500 units	40,50	<b>32,25</b>

**-20%**



**-25%**



### Pipette stands ROTILABO®

ROTH SELECTION. Material: PMMA.

Suitable for all conventional pipettes with finger support. Rubber feet for stability.

#### Single stand

Width (mm)	Depth (mm)	Height (mm)	Art. No.	Pack Qty.	DKK	DKK
125	115	230	<b>HEC2.1</b>	1 unit	232,90	<b>174,00</b>

#### For four pipettes

Width (mm)	Depth (mm)	Height (mm)	Art. No.	Pack Qty.	DKK	DKK
305	115	230	<b>HEC1.1</b>	1 unit	391,90	<b>293,65</b>

### Reagent reservoirs

ROTH SELECTION. Material: PS.

- Compatible with 8 and 12-channel pipettes
- Robust design for safe handling
- V-shaped base for non-loss pipetting
- Graduations on the inside wall
- Spouts at the corners
- **RNase/DNase-free, pyrogen-free**

#### Volume 25 ml

Length (mm)	Width (mm)	Height (mm)	Sterility	Pack.	Art. No.	Pack Qty.	DKK	DKK
147	61	25	Non-sterile	1 x 100	<b>EKT6.1</b>	100 units	963,40	<b>770,25</b>
147	61	25	<b>Sterile</b>	20 x 5	<b>EKT7.1</b>	100 units	948,75	<b>758,65</b>
147	61	25	<b>Sterile</b>	indiv.	<b>EKT8.1</b>	50 units	762,00	<b>609,40</b>

#### Volume 50 ml

Length (mm)	Width (mm)	Height (mm)	Sterility	Pack.	Art. No.	Pack Qty.	DKK	DKK
147	76	28	Non-sterile	1 x 100	<b>EKT9.1</b>	100 units	904,15	<b>722,65</b>
147	76	28	<b>Sterile</b>	20 x 5	<b>EKX0.1</b>	100 units	1.004,25	<b>802,90</b>
147	76	28	<b>Sterile</b>	indiv.	<b>EKX1.1</b>	50 units	856,50	<b>684,75</b>

#### Volume 100 ml

Length (mm)	Width (mm)	Height (mm)	Sterility	Pack.	Art. No.	Pack Qty.	DKK	DKK
147	80	32	Non-sterile	1 x 100	<b>EKX2.1</b>	100 units	960,75	<b>768,40</b>
147	80	32	<b>Sterile</b>	20 x 5	<b>EKX3.1</b>	100 units	1.144,50	<b>915,40</b>
147	80	32	<b>Sterile</b>	indiv.	<b>EKX4.1</b>	50 units	856,50	<b>684,75</b>

**-20%**





**-20%**



**Auto**  
clavable

**Pipette tip box ROTILABO®**

ROTH SELECTION. Material: PP. Autoclavable: yes.

- With inserts for 96 pipette tips
- Colour-coded inserts for quick tip volume identification
- Convenient single-hand operation for opening and closing
- Compatible with multi-channel pipettes
- Space-saving and stackable
- Environmentally friendly, black base of the box made of coloured recycled plastic

**Delivery without** pipette tips.

Not a medical device / Not an IVD product.

**For 10 µl/10 µl XL pipette tips**

Colour	Art. No.	Pack Qty.	DKK	DKK
black, light grey	<b>1EL2.1</b>	10 units	139,50	<b>111,00</b>

**For 200 µl pipette tips**

Colour	Art. No.	Pack Qty.	DKK	DKK
black, yellow	<b>1EL3.1</b>	10 units	139,50	<b>111,00</b>

**For 1000 µl pipette tips**

Colour	Art. No.	Pack Qty.	DKK	DKK
black, blue	<b>1EL4.1</b>	8 units	152,65	<b>121,50</b>

**-20 %**



### Electronic laboratory stirrers NANOSTAR 7.5 digital

IKA.

Space-saving, compact stirrer with processor-controlled speed.

- Digital speed display
- Continuously adjustable speed via rotary knob
- Constant torque over the entire speed range
- Push-through stirrer shafts
- Clamping range of chuck 0.5 to 8.2 mm

#### Technical specifications:

<b>Art. No.</b>	<b>1EH4.1</b>
Type	NANOSTAR 7.5 digital
Max. stirring capacity (H <sub>2</sub> O)	5 l
Max. viscosity	4,000 mPas
Speed range	50 to 2000 rpm
Speed display	LED
Ø Extension arm	13 mm
Extension arm length	160 mm
W x D x H	53 x 130 x 147 mm
Mains connection	100–240 V, 50/60 Hz

**Delivery incl.** R 300 stirrer shaft protection. Without stirring tool, stand and boss head please order separately (see stirrer accessories).

Art. No.	Pack Qty.	DKK	DKK
1EH4.1	1 unit	7.995,00	5.916,00

**-15 %**



### Electronic laboratory stirrers Hei-TORQUE Expert series

Heidolph.

For constant speed, even after changes in medium viscosity. Glass display with touch elements.

- Digital display of nominal/actual speed
- Continuously adjustable speed
- Push-through stirrer shafts
- Display of torque trend to detect changes in viscosity (using symbols)
- Clamping range of chuck 2.5 to 10.5 mm
- Quick-Chuck

#### Technical specifications:

Art. No.	CLT1.1	CLT2.1	CLT3.1
Type	Expert 100	Expert 200	Expert 400
Max. stirring capacity (H <sub>2</sub> O)	50 l		100 l
Max. viscosity	60,000 mPas	100,000 mPas	250,000 mPas
Speed range	10 to 2000 rpm		100 to 400 rpm
Speed range II			20 to 2000 rpm
Speed display	digital monochrome 2.4"		
Ø Extension arm	13 mm		
Extension arm length	160 mm		
W x D x H	86 x 257 x 241 mm		93 x 257 x 241 mm
Mains connection	230 V, 50/60 Hz		

**Delivery without stirring tool, stand and boss head, please order separately.**

Type	Art. No.	Pack Qty.	DKK	DKK
Expert 100	CLT1.1	1 unit	13.710,00	11.653,50
Expert 200	CLT2.1	1 unit	16.402,50	13.942,15
Expert 400	CLT3.1	1 unit	20.850,00	17.722,50

**-15 %**



### Accessories stand set for laboratory stirrers

Phönix Instrument.

With locknut to additionally secure the stand rod and prevent accidental removal. Clamping range of clamp for stand and extension arm: 4 to 24 mm. Max. weight load 5 kg. Dimensions: W 200 mm x D 310 mm x H 800 mm.

**Delivery incl.** stand plate, stand rod, clamp and immersion limiters to prevent accidental piercing to the vessel base.

Art. No.	Pack Qty.	DKK	DKK
TA77.1	1 unit	1.572,40	1.336,15

**-15 %**



### Stirring blades

IKA.

For laboratory stirrers. Material stainless steel.

#### Propeller, 4-winged

Wavelength (mm)	Ø Shaft (mm)	Ø Stirrer (mm)	Maximum speed (rpm)	Art. No.	Pack Qty.	DKK	DKK
350	8	50	2,000	0867.1	1 unit	1.365,00	1.160,25
540	8	100	800	Y436.1	1 unit	1.680,00	1.428,00
800	13	150	600	Y437.1	1 unit	5.895,00	5.010,75





### Heating and magnetic stirrer Hei-PLATE Mix'n'Heat Core+

Heidolph.

- Digital display of actual and set values for speed and hot plate temperature
- Heating output 800 W
- Stirring capacities up to 20 l
- Hot plate made of silumin with ceramic coating
- Controlled heating output via FAST/PRECISE mode, depending on requirements
- **Direct connection facility for PT 1000 medium temperature sensor** (please order the desired temperature measuring sensor and the accessories for attaching the measuring probe separately)
- Integrated contact thermometer with full functionality

#### Standard version

**Delivery without** temperature sensor, sensor holder and silicone cover. If required, please order separately.

Art. No.	Pack Qty.	DKK	DKK
1NL8.1	1 unit	6.705,00	<b>5.362,50</b>

#### Core+ sensor basic package

**Delivery incl.** Core+ heating and magnetic stirrer and Pt 1000 temperature sensor (V4A).

Art. No.	Pack Qty.	DKK	DKK
1NL9.1	1 unit	7.485,00	<b>5.985,00</b>

#### Technical specifications:

Art. No.	1NL8.1	1NL9.1	1NLA.1
Type	Mix'n'Heat Core+	Mix'n'Heat Core+ sensor basic package	Mix'n'Heat Core+ sensor advanced package
Max. stirring capacity (H <sub>2</sub> O)	20 l		
Speed range	100 to 1400 rpm		
Operating temperature	room temperature to +300 °C		
Setting accuracy	±1 °C		
Control accuracy without sensor	±5 K		
Control accuracy with sensor	±1 K		
Heating output	800 W		
Footprint	Ø 145 mm		
W x D x H, total	168 x 299 x 101 mm		
Mains connection	230 V, 50/60 Hz		

#### Core+ sensor advanced package

**Delivery incl.** Core+ heating and magnetic stirrer, Pt 1000 temperature sensor (V4A), holder for Pt 1000 (includes supporting rod and fixture with cable duct) and silicone cover.

Art. No.	Pack Qty.	DKK	DKK
1NLA.1	1 unit	8.625,00	<b>6.900,00</b>

**-20 %**



**A**uto-clavable

**Inline filter Millex® PTFE**

MERCK MILLIPORE. Autoclavable: yes.

For the sterile filtration of gases, the sterile aeration of containers and for the sterilisation and clear filtration of organic solutions. Also suitable for preventing the ingress of liquids in downstream pumps and other devices.

**Technical specifications:**

Art. No.	CY06.1	CY07.1	CY08.1
Ø membrane	50 mm		
Housing material	PP		
Filtration area	19.6 cm <sup>2</sup>		
Max. operating pressure	4 bar		
Max. application temperature	121 °C		
Inlet connection	stepped tube connection (Ø 6–13 mm) with internal Luer Cone		
Outlet connection	stepped tube connection (Ø 6–13 mm) with internal Luer Cone		

Type	Pore size (µm)	Membrane material	Art. No.	Pack Qty.	DKK	DKK
Millex®-FA	1,0	hydrophobic PTFE	<b>CY08.1</b>	10 units	<del>1.443,40</del>	<b>1.154,25</b>
Millex®-FG	0,22	hydrophobic PTFE	<b>CY06.1</b>	10 units	<del>1.443,40</del>	<b>1.154,25</b>
Millex®-FH	0,45	hydrophobic PTFE	<b>CY07.1</b>	10 units	<del>1.443,40</del>	<b>1.154,25</b>

**-20 %**



**S**

**Filter units Steripak™**

MERCK MILLIPORE. Sterile.

**Disposable filter units for sterile filtration of large volumes up to 20 l.**

With Millipore Express® (PES) membranes with high flow rate and low protein binding. Packaged ready to use, for operation with hose pumps or pressurised containers.

- Filling bell on the outlet side of the unit increases the safety of the sterilisation process
- Manual ventilation opening prevents air blocking the membrane
- For sterile filtration of tissue culture media, buffers and other aqueous solutions

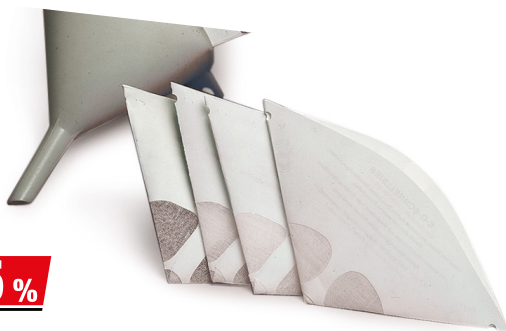
The dead volume given refers to the volume left in the filter after purging the filter with air.

**Technical specifications:**

Art. No.	CT85.1	CT86.1
Ø ext.	76 mm	
Housing material	SAN	
Sample volume	10000 ml	20000 ml
Dead volume	<2700 µl	
Filtration area	100 cm <sup>2</sup>	200 cm <sup>2</sup>
Max. operating pressure	5.2 bar	
Max. application temperature	45 °C	
Inlet connection	stepped tube connection (Ø 6–8 mm)	
Outlet connection	stepped tube connection and filling bell	

Type	Pore size (µm)	Membrane material	Sterility	Art. No.	Pack Qty.	DKK	DKK
GP 10	0,22	PES	<b>Sterile</b>	<b>CT85.1</b>	3 units	<del>1.862,65</del>	<b>1.489,90</b>
GP 20	0,22	PES	<b>Sterile</b>	<b>CT86.1</b>	3 units	<del>2.298,00</del>	<b>1.838,25</b>

**-25 %**



**Single-use sieve**

Material: cardboard, water-resistant, nylon sieve cloth.

Suitable for liquids of various consistencies, for example varnishes and paints. Height: 12 cm, upper Ø approx. 16 cm.

Type	Retention range (µm)	Colour coding	Art. No.	Pack Qty.	DKK	DKK
superfine	125	blue	<b>TA93.1</b>	125 units	<del>268,90</del>	<b>201,40</b>
extra fine	150	turquoise	<b>AXL8.1</b>	125 units	<del>268,90</del>	<b>201,40</b>
fine	190	yellow	<b>TA92.1</b>	125 units	<del>241,50</del>	<b>180,75</b>
medium	260	orange	<b>TA91.1</b>	125 units	<del>249,00</del>	<b>186,00</b>
coarse	1000	white	<b>AXL9.1</b>	125 units	<del>361,50</del>	<b>270,75</b>

**-25 %**



**Funnels**

Vitlab. Material: PP, transparent.

With handle and lifting eye. Suitable for foodstuffs.

Ø upper (mm)	Ø Outlet (mm)	Height (mm)	Tube length (mm)	Art. No.	Pack Qty.	DKK	DKK
30	1.5	45	25	<b>YA44.1</b>	1 unit	12,75	<b>9,00</b>
30	4	47	25	<b>YA45.1</b>	1 unit	12,75	<b>9,00</b>
40	4	65	35	<b>YA46.1</b>	1 unit	14,25	<b>10,50</b>
50	7	85	43	<b>YA47.1</b>	1 unit	16,15	<b>12,00</b>
75	7	108	55	<b>YA48.1</b>	1 unit	17,65	<b>12,75</b>
100	8	155	77	<b>YA49.1</b>	1 unit	19,90	<b>14,25</b>
120	11	180	90	<b>YA50.1</b>	1 unit	25,90	<b>19,15</b>
150	15	220	95	<b>YA51.1</b>	1 unit	34,15	<b>25,15</b>



**SPECIAL OFFER  
FREE FILTER SETS!**

**-20%**

**NEW / +**

**Ultra-pure water system OmniaPure xs<sup>basic</sup> promotional sets**

stakpure.

The OmniaPure xs<sup>basic</sup> device series supplies ASTM type I ultrapure water of the highest quality for analytical and life sciences applications, with a compact design optimised for resource conservation. The OptiFill<sup>basic</sup> dispensing and monitoring unit, supplied as standard, enables precise filling of laboratory vessels. The recirculation function prevents biofilm formation.

- Usable with fully demineralised water
- OptiFill<sup>basic</sup> ergonomic, flexible dispensing and monitoring unit with graphic display
- Two language settings available: DE, EN
- Ultrapure water withdrawal at the touch of a button
- Dispenser has a swivel range of up to 170°
- Display of all operating and performance parameters in real time
- Setting option for the conductivity display in MΩ x cm or μS/cm
- Compact design
- Space-saving mounting on a laboratory bench or optionally on a wall
- Password access
- Leak sensor
- Integrated pressure reducer
- Automatic voltage adjustment
- Ready to use, ready to connect, incl. filter cartridges

**OmniaPure xs<sup>basic</sup> Promotional set**

**Typical applications:** AAS, IC, ICP, buffer and media preparation.

**Delivery incl.** OmniaPure xs<sup>basic</sup> pure water system, pretreatment cartridge, ultrapure water cartridge, sterile filter capsule (0.2 μm), PE tube Ø 8 mm (L 2.5 m), PE tube Ø 8 mm (L 2.5 m) incl. input protection filter and water connection adapter R 3/4". Also includes UV lamp depending on the model.

**Also incl. free replacement cartridge set** (pretreatment cartridge and ultrapure water cartridge).

Art. No.	Pack Qty.	DKK	DKK
27PP.1	1 unit	31.927,50	25.542,00

**Technical specifications:**

Art. No.	27PP.1	27PT.1
Type	Promotional set OmniaPure xs <sup>basic</sup>	Promotional set OmniaPure xs <sup>basic</sup> UV
Conductivity of high-purity water, type I	0.055 μS/cm	
Resistance of high-purity water, type I	18.2 MΩ·cm	
Withdrawal capacity of high-purity water, type I	≤2 l/min	
Bacteria content of high-purity water, type I	<0,01 KbE/ml	
TOC value of high-purity water, type I	<10 ppb	<5 ppb
Particle content of high-purity water, type I	<1/ml	
Width	240 mm	
Depth	435 mm	
Height	530 mm	
Weight	14 kg	
Min. operating pressure	0.5 bar	
Max. operating pressure	6 bar	
Ambient temperature	2-35 °C	
Connection	R 3/4"	
Mains connection	90-240 V, 50/60 Hz	

**Note:** the specified TOC values may vary depending on the quality of the feed water. The 0.2 μm sterile filter capsule is needed to meet the requirements for particle and bacteria content.

**Feed water requirements:** water treated through ion exchange, reverse osmosis, deionisation or distillation

Feed water temperature (°C)	+2-35
Feed water pressure (bar)	0.5-6
Inlet conductivity (μS/cm)	<100
TOC value (ppb)	<50

**OmniaPure xs<sup>basic</sup> UV Promotional set**

**Typical applications:** ultratrace analysis, ICP-MS, HPLC, TOC analysis.

**Delivery incl.** OmniaPure xs<sup>basic</sup> UV pure water system, pretreatment cartridge, ultrapure water cartridge, sterile filter capsule (0.2 μm), PE tube Ø 8 mm (L 2.5 m), PE tube Ø 8 mm (L 2.5 m) incl. input protection filter and water connection adapter R 3/4". Also includes UV lamp depending on the model.

**Also incl. free replacement cartridge set** (pretreatment cartridge and ultrapure water cartridge).

Art. No.	Pack Qty.	DKK	DKK
27PT.1	1 unit	37.571,25	30.057,00

**-20%**



### Cooling rack Polar Safe™

ROTH SELECTION. Material: aluminium, blue, anodised. Autoclavable: yes.

Ideal for use on ice, dry ice, in water baths or liquid nitrogen.  
With side recesses for safe grip.  
Temperature stable up to -196 °C.

**Note:** frequent autoclaving and cleaning can cause colour changes.



#### For 2 ml cryogenic tubes

No. of slots	Arrangement of slots	L x W x H (mm)	Art. No.	Pack Qty.	DKK	DKK
15	3 x 5	113 x 77 x 38	EKP9.1	1 unit	1.604,65	1.283,25

#### For 1.5/2 ml reaction vials

No. of slots	Arrangement of slots	L x W x H (mm)	Art. No.	Pack Qty.	DKK	DKK
15	3 x 5	113 x 77 x 38	EKT0.1	1 unit	1.604,65	1.283,25

#### For 0.5 ml reaction vials

No. of slots	Arrangement of slots	L x W x H (mm)	Art. No.	Pack Qty.	DKK	DKK
24	4 x 6	113 x 77 x 33	EKT1.1	1 unit	1.911,00	1.528,50

#### PCR 96-well

Compatible with PCR trays (also with full or half frame), PCR strips and single vessels.

No. of slots	Arrangement of slots	L x W x H (mm)	Art. No.	Pack Qty.	DKK	DKK
96	8 x 12	113 x 77 x 20	EKT2.1	1 unit	2.152,90	1.722,00

#### PCR 384-well

No. of slots	Arrangement of slots	L x W x H (mm)	Art. No.	Pack Qty.	DKK	DKK
384	16 x 24	113 x 77 x 13	EKT3.1	1 unit	2.685,00	2.147,65



**-25%**

### Cryo-freezing container Mr. Frosty

Nalgene. Material: PC, lid and tube holder made of HDPE.  
With foam rubber insert.

Easy to use: only 100% isopropyl alcohol and a freezer are required.  
For reproducible, repeated cooling of samples at approx. -1 °C/min.  
Optimum cellular yield after storage at low temperatures.  
The tube holder prevents direct contact between the tubes and the alcohol;  
any marking on the tubes remains readable.  
The tube holder can be used as a floating stand for thawing samples  
in the water bath.



Suitable for	No. of slots	Ø ext. (mm)	Outer height (mm)	Art. No.	Pack Qty.	DKK	DKK
1-2 ml cryogenic vials	18	120	86	AC96.1	1 unit	1.362,75	1.021,90



**-20%**

### Cooling packs ROTILABO®

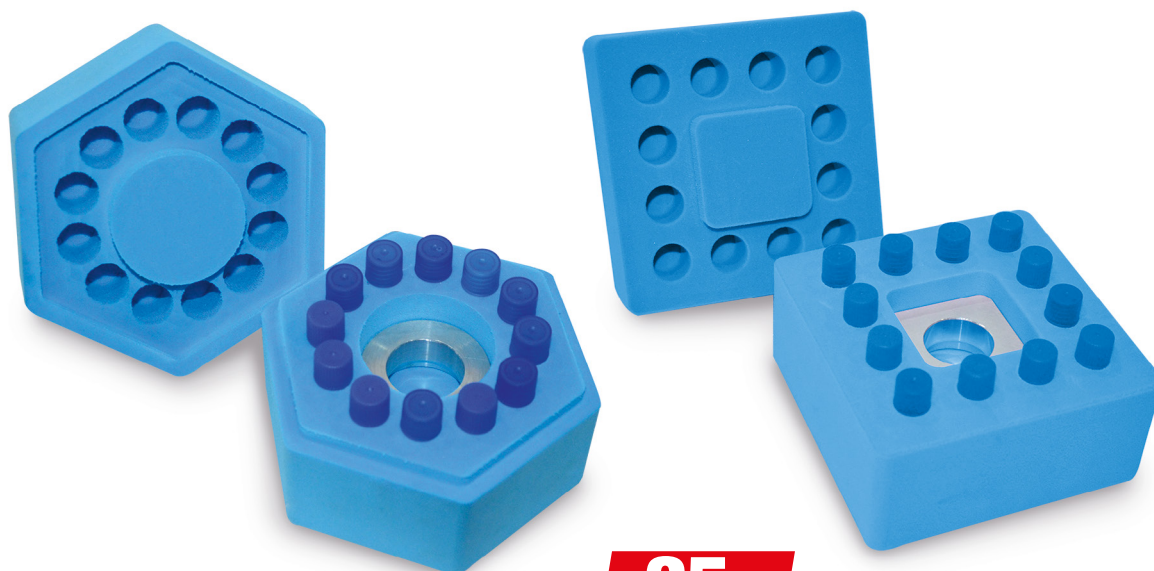
Carl ROTH. Material: plastic (PA/PE film), with gel filling.

- Outstanding cooling properties
- Suitable for multiple use



Outer length (mm)	Outer width (mm)	Art. No.	Pack Qty.	DKK	DKK
140	137	PX99.1	60 units	449,65	359,65
190	137	PY00.1	32 units	199,15	159,00





**-25%**



### Cryo-freezing container FreezeCell

ROTH SELECTION. Material: plastic EVAC (ethylene-vinyl acetate copolymer), core made of aluminium alloy.

Container for the controlled freezing of samples in cryogenic tubes or reaction vials at -80 °C for later cryogenic long-term storage.

- Heat-conducting alloy and optimised insulation for uniform cryo-preservation
- Controlled, reproducible gradual cooling rates for high cell survival rate
- Cooling rate (-1 °C/min) independent of filling quantity
- No alcohol or other coolant required
- Can be used directly without pre-cooling

#### Directions for use

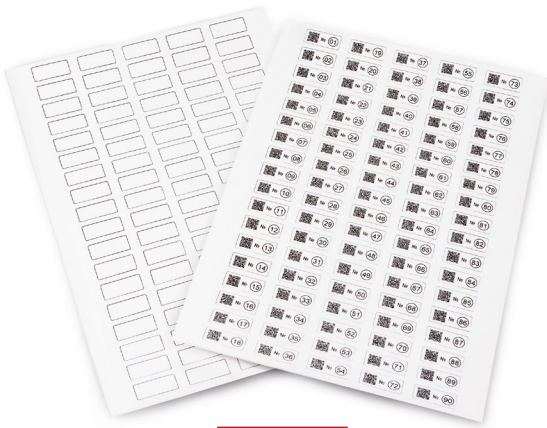
Place the samples in the freezing container and close the lid. Incubate the freezing container at -80 °C for at least three hours and do not open it during this time. At the end of the incubation period, the samples can be removed and transferred, e.g. to a tank with liquid nitrogen, for long-term storage.

#### Hexagonal

Suitable for	No. of slots	Outer length (mm)	Outer width (mm)	Outer height (mm)	Weight (g)	Art. No.	Pack Qty.	DKK	DKK
1-2 ml cryogenic vials	12	216	189	100	120	1L02.1	1 unit	1.282,15	961,15

#### Rectangular

Suitable for	No. of slots	Outer length (mm)	Outer width (mm)	Outer height (mm)	Weight (g)	Art. No.	Pack Qty.	DKK	DKK
1-2 ml cryogenic vials	12	117	117	100	160	1L03.1	1 unit	1.282,15	961,15



**A**uto-clavable

**-20%**

**A4 cryogenic labels**

scienova. Material: polyester. Autoclavable: yes. Colour: white.

- Can be inscribed with an A4 laser printer or permanent marker
- A4 sheet format: 29.7 x 21 cm
- For long-term storage in liquid nitrogen or dry ice
- Temperature resistance: -196 to +121 °C
- Good chemical resistance
- Good adhesion even after repeated freezing and thawing

**Round**

Suitable for	Label Ø (mm)	Labels/sheet (units)	Pack.	Art. No.	Pack Qty.	DKK	DKK
0.5/1.5/2 ml vessels	10	247	20 x 247	1XPP.1	20 sheets	700,50	559,90

**Square**

Suitable for	L x W (mm)	Labels/sheet (units)	Pack.	Art. No.	Pack Qty.	DKK	DKK
0.5 ml vessels	28 x 12	90	20 x 90	1XPT.1	20 sheets	700,50	559,90
0.5/1.5/2 ml vessels	33 x 14	85	20 x 85	1XPX.1	20 sheets	700,50	559,90
1.5/2 ml vessels	24 x 20	72	20 x 72	1XPY.1	20 sheets	700,50	559,90
1.5/2 ml vessels	36 x 14	68	20 x 68	1XT0.1	20 sheets	700,50	559,90
15/50 ml centrifuge tubes	67 x 25	22	20 x 22	1XT1.1	20 sheets	700,50	559,90
Racks, boxes	70 x 70	12	20 x 12	1XT2.1	20 sheets	700,50	559,90



Made in Germany

**-20%**

**EcoLine permanent marker**

edding.

For permanent marking and labelling on almost all conventional materials, e.g. paper, metal, plastic and glass.

- Round tip
- Waterproof, odourless ink without added toluene/xylene
- Fast-drying, abrasion and light-resistant

**Sustainability**

Plastic parts of the marker ≥90% recycled material (83% post-consumer).

Type	Colour	Line width (mm)	Art. No.	Pack Qty.	DKK	DKK
21 EcoLine	black	1,5–3	228C.1	10 units	115,90	92,25
21 EcoLine	blue	1,5–3	228E.1	10 units	115,90	92,25
21 EcoLine	red	1,5–3	228H.1	10 units	115,90	92,25
21 EcoLine	green	1,5–3	228K.1	10 units	115,90	92,25
25 EcoLine	black	1	228L.1	10 units	122,25	97,50
25 EcoLine	blue	1	228N.1	10 units	122,25	97,50
25 EcoLine	red	1	228P.1	10 units	122,25	97,50
25 EcoLine	green	1	228T.1	10 units	122,25	97,50

**Set**

Assorted colours: black, blue, red, green.

Type	Colour	Line width (mm)	Art. No.	Pack Qty.	DKK	DKK
21 EcoLine	assorted colours	1,5–3	228X.1	4 units	48,75	38,65
25 EcoLine	assorted colours	1	228Y.1	4 units	53,65	42,75



**-20%**

**Adhesion mat ROTILABO®**

ROTH SELECTION. Material: PVC.

Slip-resistant and padded. Effective on both sides, washable, durable.

Length (mm)	Width (mm)	Colour	Thickness (mm)	Art. No.	Pack Qty.	DKK	DKK
1,000	400	red	1	0668.1	1 roll	327,00	261,00



**-20%**

**Diamond engraving pen**

ROTH SELECTION. Material: wood (handle).

For permanent marking of glass.

Version	Art. No.	Pack Qty.	DKK	DKK
Octahedron Tip	1530.1	1 unit	212,25	169,15



**-25%**

### Stepladder

ROTH SELECTION. Material: PP.

Sturdy, with two levels, foldable. Anti-slip feet and steps.

Easy to clean. Load capacity 150 kg.

Total height (mm)	Platform height (mm)	Width (mm)	Art. No.	Pack Qty.	DKK	DKK
630	430	486	T224.1	1 unit	419,25	314,25



**-18%**

### Titration TitroLine® 5000

SI Analytics.

Very easy to use automatic titrator for pH and mV titration: Select saved standard method, connect electrodes and press Start. In just a few minutes, the sample is titrated and the result is displayed on the screen. Result can also be output as a PDF file on USB.

#### Set 1

Range of applications: current redox titrations, such as iodine and peroxide value, permanganate index, COD and other applications (Set 1 + metal combination electrode Pt 62 RG)

**Delivery incl.** support rod, electrode/burette tip holder, hose kit and titration syringe, test tubes, magnetic stirrer, magnetic stirring rod, screw cap with GL 45 thread, NS 14.5/M8x1 adapter, drying tube, USB data cable and mains adapter.

Without electrode, please order separately.

Art. No.	Pack Qty.	DKK	DKK
HAN4.1	1 unit	25.695,40	21.067,15

### Titration burette according to Dr Schilling

Bürkle.

With Schellbach stripe. The burette is a universal aid in laboratories, electroplating, water treatment stations, sewage treatment plants, field studies, etc.

Precise dosing system with push-button, fine titration with micro screw and exact outlet tip, ultrapure drop formation.

- EX-calibrated
- With blue ring-barking
- Automatic zero-point extraction
- Feet on bottle for enhanced stability
- Graduation corresponds to class B (tolerances acc. to DIN ISO 385)

#### Materials in contact with media:

PE, PP, natural rubber and borosilicate glass 3.3.

#### (1) Automatic

Vol. (ml)	Graduation (ml)	Bottle volume (ml)	Tolerance (ml)	Art. No.	Pack Qty.	DKK	DKK
5	0,05	500	±0,015	8226.1	1 unit	600,40	480,00
10	0,05	500	±0,045	8227.1	1 unit	600,40	480,00
15	0,1	500	±0,045	8228.1	1 unit	600,40	480,00
25	0,1	1,000	±0,075	8229.1	1 unit	600,40	480,00
50	0,1	1,000	±0,075	8230.1	1 unit	740,65	567,75

#### Technical specifications:

Art. No.	HAN4.1	HAN5.1	HAN6.1
Type	TitroLine® 5000		
Max. piston stroke	20 ml		
Volume range	0,000 – 9999.999 ml		
Display resolution	0,005 – 0,025 ml		
Dosing speed	40 ml/min		
Dosing accuracy	systematically 0.15%, incidentally 0.05%		
pH measuring range	-3 to +17		
Voltage measuring range	-1900 to +1900 mV		
Temperature measuring range	-30 to +115 °C		
pH resolution	0,01		
Voltage resolution	1 mV		
Temperature resolution	1 °C		
pH accuracy	±0.05		
Voltage accuracy	±1 mV		
Temperature accuracy	±0.5 °C		
Connection	pH: DIN 19262, °C: 2 x 4 mm banana plugs (NTC 30 kΩ, PT 1000)		
Calibration points	pH 1/2/3		
Port	2 x RS 232-C, 1 x USB A, 1 x USB B		
W x D x H	135 x 205 x 310 mm		
Mains connection	100–240 V, 50/60 Hz		

#### Set 2

Range of applications: current acid-alkali titrations such as acid capacity, nitrogen according to the Kjeldahl method and total acid in wine and beverages

**Delivery incl.** pH combination electrode A7780, buffer solution (pH 4.00 and 7.00), support rod, electrode/burette tip holder, hose kit and titration syringe, test tubes, magnetic stirrer, magnetic stirring rod, screw cap with GL 45 thread, NS 14.5/M8x1 adapter, drying tube, USB data cable and mains adapter.

Art. No.	Pack Qty.	DKK	DKK
HAN5.1	1 unit	29.460,40	24.155,25

#### Set 3

Range of applications: titration of chloride and sodium chloride (salt) in foods such as mustard, cheese, milk, water and other samples

**Delivery incl.** metal combination electrode AgCl 62 RG with connecting cable, support rod, electrode/burette tip holder, hose kit and titration syringe, test tubes, magnetic stirrer, magnetic stirring rod, screw cap with GL 45 thread, NS 14.5/M8x1 adapter, drying tube, USB data cable and mains adapter.

Art. No.	Pack Qty.	DKK	DKK
HAN6.1	1 unit	28.154,25	23.082,75



**-20%**

#### (2) Shatter-proof

Glass burette with plastic casing increases durability and serves as shatter protection.

Vol. (ml)	Graduation (ml)	Bottle volume (ml)	Tolerance (ml)	Art. No.	Pack Qty.	DKK	DKK
15	0,1	500	±0,045	HEX0.1	1 unit	661,15	528,75
25	0,1	1,000	±0,075	HEX1.1	1 unit	661,15	528,75
50	0,1	1,000	±0,075	HEX2.1	1 unit	737,65	589,50





**-25 %**

**Laboratory cooling water monitor AQUASTOP® II**

ROTH SELECTION.

For monitoring cooling water flow and temperature in the laboratory. For installation in apparatus that runs without permanent supervision. Power supply and water supply are cut off in case of irregularities or when the preset temperature limit is exceeded.

**Application:**

- If the flow rate drops below the preset minimum level, the solenoid valve shuts off the coolant supply and connected electrical device (e.g. heating mantle) is de-energised.
- If the maximum temperature is exceeded, the solenoid valve stays open, the apparatus continues to be cooled and the electrical device is de-energised.

The temperature at the coolant outlet is recorded by the internal NTC sensor integrated in the flow sensor. As an option, an external Pt 100 temperature sensor which automatically deactivates the internal sensor can be installed in a freely selectable position on the test set-up (if required, please order separately).

**Delivery incl.** solenoid valve, flow sensor with internal NTC sensor and hose connector (for hose internal Ø 10 mm).

Art. No.	Pack Qty.	DKK	DKK
CKY2.1	1 unit	14.311,15	10.732,90

**Features:**

- 2-line LED display for simultaneous display of flow rate and temperature
- LED for switching status and alarm indication
- Freely selectable alarm limits
- Acoustic pre-alarm alerts user before final deactivation
- With Schuko socket on the back

**Technical specifications:**

Art. No.	CKY2.1
Type	AQUASTOP® II
Flow measuring range	2–99 l/h
Int. temp. measuring range	0 to +80 °C
Ext. temp. measuring range	0 to +250 °C
Setting accuracy	±1 l/h, ±1 °C
Fuse	16 A mT (load) 0.5 A mT (solenoid valve) 0.2 A mT (control unit)
Solenoid valve	connection to tap: 3/4" IG, connection to apparatus: 3/4" AG or hose connector Ø 10 mm
L x W x H	205 x 175 x 78 mm
Weight	1300 g
Rated power	3,500 W
Rated current	15 A
Mains connection	230 V, 50 Hz

**-25 %**



**Temperature gauge Pt 100 for AQUASTOP® II**

ROTH SELECTION. Material: stainless steel 1.4571.

External temperature gauge Pt 100 with LEMO connector.

**Delivery incl.** connection cable.

Version	Art. No.	Pack Qty.	DKK	DKK
0 to +250 °C	CKY3.1	1 unit	1.209,40	906,75

**Technical specifications:**

Art. No.	CKY3.1
Parameters	temperature
Temperature sensor	Pt 100
Temperature measuring range	0 to +250 °C
Sensor: Ø x L	4 x 200 mm
Connection	Lemo
Cable length	2 m





**-20%**

### Cooling and heating thermoshaker Matrix Orbital Delta Plus

IKA.

For cooling, heating and mixing in circular motions.

Delivery without interchangeable block (please order separately).

Version	Max. exchange blocks	Art. No.	Pack Qty.	DKK	DKK
Heating and cooling	1	1H67.1	1 unit	20.670,00	16.530,00

#### Features:

- TFT display with convenient menu structure
- Snap-lock mechanism for changing attachments and automatic attachment detection
- For mixing liquids at up to 3000 rpm and with a 3 mm shaking stroke (depending on the attachment used)
- Automatically performs mixing and heating tasks with five programmable ramps with five increments each consisting of temperature speed and time

#### Technical specifications:

Art. No.	1H67.1
Type	Matrix Orbital Delta Plus
Operating temperature	15 °C below room temperature up to 100 °C
Temperature adjustment range	+1 to +100 °C
Accuracy	0,5 K
Resolution	1 °C
Timer	1 s to 100 h, (in 1 min increments) or continuous operation
Shaking frequency	300–3000 rpm
Shaking amplitude (stroke)	3 mm
W x D x H	216 x 351 x 127 mm
Mains connection	100–240 V, 50/60 Hz

**-20%**

### Accessories interchangeable block for Matrix Orbital Delta Plus thermoshaker

IKA.

#### For reaction vials

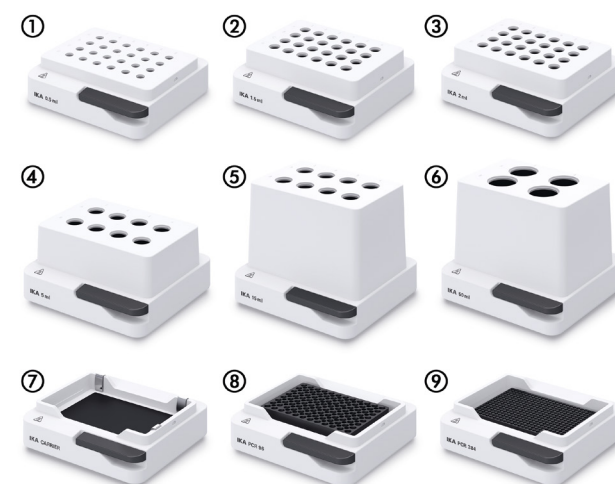
Max. shaking frequency of 2000 rpm for 0.5/1.5/2.0 ml reaction vials, max. 1000 rpm for 5 ml reaction vials (max. Ø 17 mm).

Pic.	Suitable for	Art. No.	Pack Qty.	DKK	DKK
(1)	24 x 0.5 ml conical reaction vials	1H8A.1	1 unit	4.425,00	3.540,00
(2)	24 x 1.5 ml conical reaction vials	1H8C.1	1 unit	4.132,50	3.306,00
(3)	24 x 2.0 ml cylindrical reaction vials	1H8E.1	1 unit	4.132,50	3.306,00
(4)	8 x 5.0 ml conical reaction vials	1H8H.1	1 unit	4.425,00	3.540,00

#### For centrifuge tubes

Max. shaking frequency 1000 rpm.

Pic.	Suitable for	Art. No.	Pack Qty.	DKK	DKK
(5)	8 x 15 ml centrifuge tubes (Falcon®)	1H8K.1	1 unit	4.425,00	3.540,00
(6)	4 x 50 ml centrifuge tubes (Falcon®)	1H8L.1	1 unit	4.132,50	3.306,00



#### For trays

Max. shaking frequency of 3000 rpm for microtiter plates/384-well PCR trays, max. 2000 rpm for 96-well PCR trays and max. 1000 rpm for deep-well trays.

Pic.	Suitable for	Art. No.	Pack Qty.	DKK	DKK
(7)	Microtiter plate or deep-well tray	1H8N.1	1 unit	4.957,50	3.966,00
(8)	96-well PCR tray	1H8P.1	1 unit	4.957,50	3.966,00
(9)	384-well PCR tray	1H8T.1	1 unit	5.310,00	4.248,00



**-20%**

### Benchtop centrifuge CD-0424

Phönix Instrument.

With 4-slot swing-out rotor (90°) for centrifuging of 15 or 50 ml Falcon® centrifuge tube or 5/15 ml tube.

- Displays centrifugation time, in rpm or x g
- Memory capacity for 3 programs
- Three acceleration speeds and four braking speeds can be set

**Delivery incl.** 4-slot swing-out rotor (90°) for 4 x 50 ml Falcon® centrifuge tubes, and adapter set (sleeve inner Ø 17 mm, H 85 mm and sleeve inner Ø 13 mm, H 60 mm).

Not a medical device / Not an IVD product.

Art. No.	Pack Qty.	DKK	DKK
1Y86.1	1 unit	8.788,15	7.030,50

#### For use of the following types of vessel:

- 4 x 50 ml centrifuge tubes, Falcon® (Ø 29 x L 115 mm)
- 4 x 15 ml centrifuge tubes, Falcon® (Ø 17 x L 120 mm)
- 4 x 15 ml standard test tubes (Ø 17 x L 100 mm)
- 4 x 4.5-4.9 ml tubes (Ø 13 x L 66/75 mm)

#### Technical specifications:

Art. No.	1Y86.1
Type	CD-0424
Maximum speed	4,000 rpm
Additional data	speed can be adjusted in increments of 100 rpm
Maximum RCF	2500 x g
Minimum speed	500 rpm
Timer function	1 to 99 mins/continuous operation
W x D x H	370 x 440 x 270 mm
Mains connection	100–240 V, 50/60 Hz

**A**uto-clavable

### Screw caps LABOCAP

ROTH SELECTION. Material: aluminium colour anodised, chrome-nickel-steel spring. Autoclavable: yes.  
For Erlenmeyer and culture flasks with straight necks, Ø 38 mm.  
Spring clamp on the vessel outer wall.  
Temperature stable up to 140 °C.

Only use neutral cleaner for cleaning.

Suitable for	Colour	Art. No.	Pack Qty.	DKK	DKK
Ø 37/39 mm	silver	<b>K395.1</b>	10 units	319,50	<b>255,00</b>
Ø 37/39 mm	blue	<b>K396.1</b>	10 units	319,50	<b>255,00</b>
Ø 37/39 mm	red	<b>K397.1</b>	10 units	319,50	<b>255,00</b>



**S**

### Petri dishes square with grid

ROTH SELECTION. Material: PS. **Sterile**.  
Volume 110 ml. Ideal for phage typing or colony counting, for example.  
With 13 mm grid on bottom, alphanumeric coding.  
With vents to prevent condensation.

Delivery incl. lid.

L x W x H (mm)	Sterility	Pack.	Art. No.	Pack Qty.	DKK	DKK
100 x 100 x 15	<b>Sterile</b>	50 x 10	<b>AEL9.1</b>	500 units	1-927,15	<b>1.734,00</b>

**S**

### Bacterial cell spreaders Delta™

ROTH SELECTION. Material: ABS. **Sterile**.  
With smooth surface, prevents scratching for agar surfaces.  
Delta-shaped head distributes the contact pressure evenly for a smooth application. Individually packed.

Total length (mm)	Width (mm)	Ø (mm)	Art. No.	Pack Qty.	DKK	DKK
172	37	4	<b>PC59.1</b>	500 units	813,00	<b>649,90</b>





**A**uto  
clavable

### Baffled flasks ROTILABO®

ROTH SELECTION. Material: DURAN® glass. Autoclavable: yes.

Culture flask with three integrated baffles for better mixing. Ideal for cultivating *S. cerevisiae* and aerobic bacteria cultures. Flasks with straight necks, suitable for Erlenmeyer CAP caps K395.1-K397.1.

Version	Vol. (ml)	Art. No.	Pack Qty.	DKK	DKK
Straight neck	100	LY94.1	1 unit	375,00	280,90
Straight neck	250	LY95.1	1 unit	415,50	311,25
Straight neck	500	LY96.1	1 unit	391,15	292,90
Straight neck	1,000	LY97.1	1 unit	555,75	416,25
Straight neck	2,000	LY98.1	1 unit	741,75	556,15
Neck with flanged rim	5,000	PK29.1	1 unit	1.362,75	1.021,90

**-25%**

**Stereo microscope OS series**

KERN.

Practical and sterile stereo microscope for training and laboratory. With integrated handle and stable stand.

- Ergonomically designed working surface for high level of comfort
- Interchangeable lens with three pre-defined magnifications for fast and effective work
- Eyepiece fixed securely in the tube
- Reflected light and transmitted light can be controlled separately

**Technical specifications:**

Art. No.	1T88.1	HHC9.1
Type	OSE-421	OSF-439
Tube	binocular	
Total magnification	20x, 40x	10x, 20x, 40x
Magnification type	turret	
Ocular magnification	widefield 10x	
Lens magnification	2x, 4x	1x, 2x, 4x
Field of view	20 mm	
Dioptre compensation	±5 dpt at both ocular tubes	±5 dpt on the left eyepiece
Angular observation	45 °	
Head	fixed	
Distance between eyepieces	55–75 mm	
Working distance	57 mm	
Light source	LED	
Type of lighting	incident light and transmitted light	
Image focusing	coarse focus	
Power supply	mains-powered and battery operation (3x battery Micro/AAA 1.5 V)	mains-powered
Mains connection	100–240 V, 50/60 Hz	



(1) OSE-421

**Delivery incl.** stage inserts (black/white and matte glass), eyecups and dust cover. Without batteries, please order separately.

Art. No.	Pack Qty.	DKK	DKK
1T88.1	1 unit	2.325,00	1.743,75

(2) OSF-439

**Delivery incl.** stage inserts (black/white and matte glass), eyecups and dust cover.

Art. No.	Pack Qty.	DKK	DKK
HHC9.1	1 unit	3.075,00	2.306,25



**-25%**

**Stereo zoom microscope OZL-96 series**

KERN.

Ideal for training organisations, workshops and installation and repair workplaces, e.g. in the electronics industry.

- High level of flexibility thanks to universal telescopic arm stand. Particularly suited to large samples and free-hand working under the microscope
- With extra-wide field eyepieces for greater vision angle, thereby ideal for people who wear glasses
- Continuously variable magnification via zoom lens
- Ideal illumination of the sample via dimmable LED ring light (4.5 W, incident light)

**Optional accessories (please order separately):**

- Widefield eyepieces and ancillary lenses for modulating the total magnification

**Technical specifications:**

Art. No.	1XYP.1	1XYT.1
Type	OZL 961	OZL 963
Tube	binocular	trinocular
Total magnification	7x to 45x – can be expanded up to 180x as an option	
Magnification type	zoom	
Ocular magnification	super wide angle (HWF) 10x	
Lens magnification	0.7–4.5x	
Field of view	20 mm	
Dioptre compensation	±5 dpt at both ocular tubes	
Angular observation	45 °	
Head	can be rotated 360°	
Distance between eyepieces	55–75 mm	
Working distance	105 mm	
Light source	LED	
Type of lighting	incident light	
Image focusing	coarse focus	
Power supply	mains-powered	
Mains connection	100–240 V, 50/60 Hz	

**Delivery incl.** eyecups and dust cover.

**OZL 961 binocular**

Art. No.	Pack Qty.	DKK	DKK
1XYP.1	1 unit	7.575,00	5.681,25

**OZL 963 trinocular**

With trinocular head for mounting a microscope camera on the phototube using a C-mount adapter. Please order the C-mount adapter separately.

Art. No.	Pack Qty.	DKK	DKK
1XYT.1	1 unit	8.175,00	6.131,25





**-30%**

**Magnifier lamp LED**

MAUL.

Ideal for precision work in laboratories, workshops and engineering offices.

- Glass lenses, metal stand
- Uniform illumination thanks to LEDs arranged in a ring (56 SMD LEDs, non-replaceable)
- Colour temperature: daylight white
- Ball-and-socket joint allows three-dimensional head rest adjustment
- Stable metal arm in a plastic trim, can be rotated by 360° and tilted
- Arm length bottom 400 mm, top 390 mm, height in normal working position 440 mm
- Clamp base for clamping widths of up to 65 mm

**Technical specifications:**

<b>Art. No.</b>	<b>KHE1.1</b>
Colour	white
Magnification	1.75x
Dioptres	3 dpt
Stand length	720 mm
Field of view	Ø 127 mm
Light source	LED
Service life	20,000 hours
Performance	8 W
Energy efficiency class	E
Luminosity	2,220 lx
Luminous flux	580 lm
Colour temperature	6500 K
Cable length	1.70 m
Mains connection	230 V, 50 Hz

Lamp contains integrated LEDs which cannot be changed.

**Delivery incl.** protective cap.

Version	Art. No.	Pack Qty.	DKK	DKK
With clamp base	<b>KHE1.1</b>	1 unit	<del>1,346,65</del>	<b>942,40</b>

**-25%**



**Lens paper**

Motic.

For trace-free cleaning, also removes dust and oil. 500 sheets per pack.

Length (mm)	Width (mm)	Art. No.	Pack Qty.	DKK	DKK
100	45	<b>LH30.1</b>	500 sheet(s)	<del>150,00</del>	<b>112,50</b>

**-10%**



**Silicone-free laboratory grease glisseal HV**

Borer Chemie.

Highly vacuum-resistant, silicone-free laboratory grease for sealing and lubricating fixed and rotating glass joints and for lubricating plastic and metal connections.

- Highly vacuum-resistant
- Colour: dark brown
- Excellent temperature stability, permanently smooth consistency between -40 and +220 °C, temporarily up to 320 °C (in the absence of air)
- No drop point
- Chemically resistant to most acids, bases and gases
- Insoluble in water and low molecular weight mono- or polyhydric alcohols

Packaging type	Art. No.	Pack Qty.	DKK	DKK
tube	1L7X.2	30 g	172,15	154,50



**-25%**

**Instant glue CA221**

Ethyl cyanoacrylate based single-component instant glue for plastics, metals and porcelain. The adhesive bonds are to a large degree temperature- and chemical-resistant. Not suitable for permanent contact with water. Starts to harden in less than 1 minute and cures fully after 8–10 hours. Storage temp. +10 °C. Shelf life approx. six months.

**Warning H315-H319-H335-EUH202**

Art. No.	Pack Qty.	DKK	DKK
0258.1	10 ml	51,40	38,25

**-25%**



**Wet and dry battery-operated vacuum cleaner**

Fakir.

Cordless vacuum cleaner for wet and dry dirt. Capacity for dry dirt 400 ml, for liquids 250 ml. Dust container is easy to empty, washable filter. With lithium-ion battery, charging dock and charge indicator light. Power consumption: 7,4 V; 2Ah. Operating time up to 23 min.



**-20%**

**Absorbent paper ROTILABO®**

ROTH SELECTION. Material: cellulose, PE. Colour: white.

**Benchtop protective paper**

Absorbent white paper, coated on one side with waterproof PE.

As a work support to protect laboratory benches or line cupboards and drawers. Protects surfaces from chemicals, dirt and contamination. Also suitable for analytical and isotope laboratories.

**Sheets. Absorbency approx. 170 g/m<sup>2</sup>**

Surface weight (g/m <sup>2</sup> )	Length (cm)	Width (cm)	Art. No.	Pack Qty.	DKK	DKK
125	52	42	HY90.1	100 units	757,15	605,25
125	57	46	HY91.1	100 units	836,65	669,00
125	60	50	HY92.1	100 units	1.100,65	880,15

**Roll. Absorbency approx. 170 g/m<sup>2</sup>**

Surface weight (g/m <sup>2</sup> )	Length (m)	Width (cm)	Art. No.	Pack Qty.	DKK	DKK
125	50	49	HY93.1	1 roll	1.099,15	878,65
125	50	60	HY94.1	1 roll	1.322,25	1.057,50
125	50	92	HY95.1	1 roll	1.765,90	1.412,25

**Sheets. Absorbency approx. 200 g/m<sup>2</sup>**

Surface weight (g/m <sup>2</sup> )	Length (cm)	Width (cm)	Art. No.	Pack Qty.	DKK	DKK
225	57	46	HY96.1	50 units	822,00	657,40
225	60	50	HY97.1	50 units	757,90	606,00

**Roll. Absorbency approx. 200 g/m<sup>2</sup>**

Surface weight (g/m <sup>2</sup> )	Length (m)	Width (cm)	Art. No.	Pack Qty.	DKK	DKK
225	50	49	HY98.1	1 roll	2.096,25	1.677,00
225	50	60	HY99.1	1 roll	2.547,75	2.038,15
225	50	92	KA00.1	1 roll	3.571,90	2.857,15

**Sheets. Absorbency approx. 250–280 g/m<sup>2</sup>**

Surface weight (g/m <sup>2</sup> )	Length (cm)	Width (cm)	Art. No.	Pack Qty.	DKK	DKK
144	60	48	1941.1	100 units	1.717,50	1.374,00

**Roll. Absorbency approx. 250–280 g/m<sup>2</sup>**

Surface weight (g/m <sup>2</sup> )	Length (m)	Width (cm)	Art. No.	Pack Qty.	DKK	DKK
144	100	48	1959.1	1 roll	2.535,00	2.028,00
144	100	60	1006.1	1 roll	3.067,50	2.454,00

**Technical specifications:**

Art. No.	HNP5.1
Type	wet and dry battery-operated vacuum cleaner
L x W x H	410 x 115 x 128 mm
Weight	985 g
Mains connection	100–240 V, 50/60 Hz

**Delivery incl.** 1 x crevice nozzle, 1 x upholstery brush, 1 x liquids nozzle, 1 x charging dock with accessories deposit for wall mounting.

Art. No.	Pack Qty.	DKK	DKK
HNP5.1	1 unit	773,25	579,40



**Reusable wipes WYPALL® X80**

Kimberly-Clark. Material: cellulose, plastic.

Made of HYDROKNIT® (cellulose fibres (81%) embedded in spunbond non-woven fabric (19% synthetic fibres)). 1-ply. Extremely durable, rapidly absorbent, with excellent absorbing capacity and tear resistance.

- Reusable fleece wipe for wet and dry cleaning
- For demanding wiping and cleaning applications
- Ideal for wiping down rough surfaces in industrial manufacturing environments
- Suitable for contact with foodstuffs

**Wipes folded into quarters in the pouch**

Type	Ply	Colour	Length (cm)	Width (cm)	Packaging type	Pack.	Art. No.	Pack Qty.	DKK	DKK
8388	1-ply	white	31	32	bag	4 x 50 wipes	1LY5.1	200 units	587,25	440,25

**Wipes in dispenser box**

Type	Ply	Colour	Length (cm)	Width (cm)	Packaging type	Pack.	Art. No.	Pack Qty.	DKK	DKK
8279	1-ply	white	42.7	28.2	box	1 x 160 wipes	1LY6.1	160 units	587,65	440,25

**Pre-perforated wipes on a roll**

Made of HYDROKNIT® (cellulose fibres (82%) embedded in spunbond non-woven fabric (18% synthetic fibres)).

Type	Ply	Colour	Length (cm)	Width (cm)	Ø (cm)	Packaging type	Pack.	Art. No.	Pack Qty.	DKK	DKK
8377	1-ply	white	31	31.5	31.4	roll	1 x 475 wipes	1LY7.1	1 unit	1-362,75	1.021,90

**Safety glasses pure-fit**

UVEX. Material: PC.

Acc. to **EN 166, EN 170.**

- Ultra-lightweight safety glasses with robust lenses
- Innovative temple concept - flexible temples for a perfect fit and secure hold
- Frameless lens design for a wide field of vision
- Protection at the sides
- Anatomically shaped nose pad for improved wearing comfort
- Made of pure polycarbonate - 100% recyclable
- Non-metallic
- Weight: 19 g

**-20%**



Frame colour	Lens design	Manufacturer no.	Art. No.	Pack Qty.	DKK	DKK
colourless, transparent	clear, UV protection	9145014	<b>204C.1</b>	1 unit	76,50	<b>60,75</b>
colourless, transparent	clear, UV protection, anti-fog, anti-scratch	9145265	<b>204E.1</b>	1 unit	81,00	<b>64,50</b>

**-15%**



**Glass lens cleaner UVEX cleaning fluid**

UVEX.

Cleaning fluid for safety glasses and protective visors. Does not fit in the spectacle cleaning stations.

Manufacturer no.	Pack.	Art. No.	Pack Qty.	DKK	DKK
9972101	500 ml spray bottle	<b>224Y.1</b>	1 unit	104,25	<b>88,15</b>

**Face shield TUFFMASTER**

3M.

Acc. to **EN 166.** Protects against medium-energy flying particles and fluid and liquid metal splashes. Pane made of 2 mm strong PC (230 x 370 mm), height-adjustable and can be locked. Continuously adjustable. Soft headband made of vinyl.

Lens design	Art. No.	Pack Qty.	DKK	DKK
clear	<b>T668.1</b>	1 unit	378,40	<b>302,25</b>



**-20%**



**-30%**

**Microfibre lens cleaning cloths SEKUROKA®**

Carl ROTH. Material: microfibre.

For streak-free cleaning of glasses and optical devices. Washable and reusable. Dimensions: 150 x 150 mm.

Colour	L x W (mm)	Art. No.	Pack Qty.	DKK	DKK
white	150 x 150	<b>E172.1</b>	5 units	95,25	<b>66,40</b>



**-30%**

Cat. III



### Overalls TYCHEM® 2000 C

DuPont Personal Protection. Material: TYCHEM® 2000 C (PE spunbond), coated.

Type 3, 4, 5 and 6 according to the European standards for chemical protection clothing.

- 100% particle-tight
- Lint-free, wear- and tear-resistant
- Antistatic acc. to EN 1149-1
- With hood and elastic at face, arms, legs and waist
- Taped double zip cover
- With special chin flap for optimal sealing of respiratory protection masks
- 100% tight seams

Protection against many concentrated inorganic acids and bases, and saline solutions.

Fabric weight 83.2 g/m<sup>2</sup>. Material thickness 183 µm.

#### Applications:

- Handling powdery hazardous substances
- Working with inorganic acids and bases
- Protection against radioactive particles
- Handling blood (with blood-borne viruses such as hepatitis and HIV)
- Handling grains and plants by spraying pressurised agrochemicals

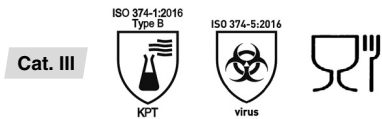
Size	Body size (cm)	Colour	Art. No.	Pack Qty.	DKK	DKK
M	168–176	yellow	AK28.1	1 unit	311,25	217,50
L	174–182	yellow	AK29.1	1 unit	311,25	217,50
XL	180–188	yellow	AK30.1	1 unit	311,25	217,50
XXL	186–194	yellow	AK31.1	1 unit	311,25	217,50
XXXL	186-194	yellow	1HH9.1	1 unit	317,25	221,65





**-25 %**

Size	Length (mm)	Colour	Art. No.	Pack Qty.	DKK	DKK
7 (S)	390-410	blue	<b>20C8.1</b>	20 pair	529,50	<b>392,25</b>
8 (M)	390-410	blue	<b>20C9.1</b>	20 pair	529,50	<b>392,25</b>
9 (L)	390-410	blue	<b>20CA.1</b>	20 pair	529,50	<b>392,25</b>
10 (XL)	390-410	blue	<b>20CC.1</b>	20 pair	529,50	<b>392,25</b>

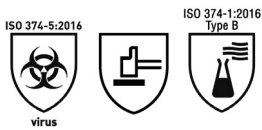


**Disposable gloves SivoChem® 759**

KCL by Honeywell. Material: nitrile rubber. Non-sterile.  
 Acc. to EN 420, EN ISO 374-1:2016 type B (KPT), EN ISO 374-5:2016 (virus), ASTM-F 1671:2007, AQL 0.65.  
 Acc. to 1935/2004 safe for contact with foodstuffs.

- Very high tactile sensitivity
- Increased tear resistance
- Good chemical resistance
- Rolled edge
- Anatomic fit
- Unpowdered and without natural latex
- Silicone-free surface
- Wall thickness: 0.16 mm
- 20 pairs in polybag

**Applications:** laboratory and research, biotechnology industry, medical technology industry, pharmaceuticals, food and chemical industry, cleaning and maintenance work, product protection.



**Chemical protection gloves SHOWA 892**

SHOWA. Material: fluorinated rubber, butyl rubber.  
 Acc. to EN 420, EN 388 (1010X), EN ISO 374-1/type B (DFL), EN ISO 374-5 (virus). Thin chemical protection glove made with a Viton® top layer and butyl bottom layer, unlined. Very high flexibility and good tactile sensitivity. Anatomically formed, cuffs with rolled edge. Smooth surface, thickness 0.3 mm.  
 Suitable for handling aromatic, aliphatic and chlorinated hydrocarbons, organics and inorganic acids, bases, animal fats and oils.

**-15 %**



Length (mm)	Size	Art. No.	Pack Qty.	DKK	DKK
300	7	<b>CY66.1</b>	1 pair	985,90	<b>837,40</b>
300	8	<b>CY67.1</b>	1 pair	985,90	<b>837,40</b>
300	9	<b>CY68.1</b>	1 pair	985,90	<b>837,40</b>
300	10	<b>CY69.1</b>	1 pair	985,90	<b>837,40</b>
300	11	<b>CY70.1</b>	1 pair	985,90	<b>837,40</b>



**Multi-purpose gloves Pro-Fit 39122**

Fitzner Arbeitsschutz. Material: polyamide, PU.  
 Acc. to EN 420 and EN 388 (3131X). Seamless circular knit with elasticated knitted cuff. Palms and fingertips with polyurethane coating. Colour: white.

- Breathable, comfortable to wear
- Excellent fit
- Secure grip with excellent dexterity
- High resistance to wear for a long service life

For protection against minor cuts and piercing injuries.

Size	Art. No.	Pack Qty.	DKK	DKK
6	<b>HEN1.1</b>	12 pair	155,65	<b>116,25</b>
7	<b>HEN2.1</b>	12 pair	155,65	<b>116,25</b>
8	<b>HEN3.1</b>	12 pair	155,65	<b>116,25</b>
9	<b>HEN4.1</b>	12 pair	155,65	<b>116,25</b>
10	<b>HEN5.1</b>	12 pair	155,65	<b>116,25</b>

**-25 %**





**-15%**



Cat. III



**Cold protection gloves Cryo-Grip® Gloves, waterproof**

Tempshield. Material: nylon, polyolefin, polyester, cotton.

Acc. to EN 420, EN 388 (2223X) and EN 511 (221). Semi-permeable outer skin made of stitched nylon fabric. Seamless, laminated interior. Lightweight polyolefin/polyester lining in knitted cotton inner glove. Increased grip on the palm for improved dexterity when handling smaller objects.

**100% waterproof design**, with an additional seamless inner glove.

Protection in the lowest temperature range down to -160 °C.

Suitable for handling dry ice (-79 °C), operations in the gas phase of cryogenic liquefied media, such as **liquid nitrogen in the gas phase**.

**For long-term work in the gas phase** and where there is a risk of wetting with liquids, or with **infectious** or **toxic** substances, for example. Penetration through the seams on the fingers is prevented.

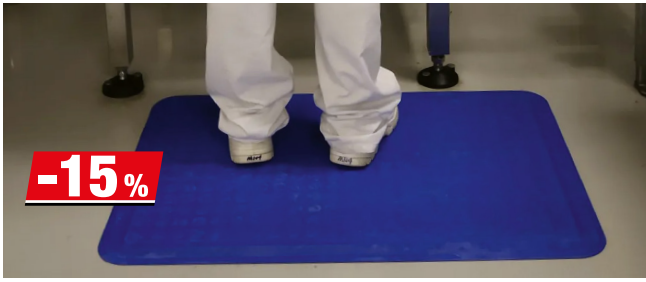
**Attention: do not submerge in cryogenic liquids.**

**With cuff, elbow length**

Length (mm)	Size	Colour	Art. No.	Pack Qty.	DKK	DKK
440	S (8)	blue	1H7A.1	1 pair	2.753,65	2.340,00
440	S (8)	pink	1H7C.1	1 pair	2.753,65	2.340,00
440	M (9)	blue	1H7E.1	1 pair	2.753,65	2.340,00
440	M (9)	pink	1H7H.1	1 pair	2.753,65	2.340,00
485	L (10)	blue	1H7K.1	1 pair	2.753,65	2.340,00
485	L (10)	pink	1H7L.1	1 pair	2.753,65	2.340,00
485	XL (11)	blue	1H7N.1	1 pair	2.797,90	2.377,90
485	XL (11)	pink	1H7P.1	1 pair	2.797,90	2.377,90
485	XXL (12)	blue	1H7T.1	1 pair	2.950,90	2.508,00

**With cuff, shoulder length**

Length (mm)	Size	Colour	Art. No.	Pack Qty.	DKK	DKK
625	S (8)	blue	1H75.1	1 pair	3.370,15	2.864,65
625	M (9)	blue	1H76.1	1 pair	3.370,15	2.864,65
685	L (10)	blue	1H77.1	1 pair	3.370,15	2.864,65
685	XL (11)	blue	1H78.1	1 pair	3.434,65	2.919,40
685	XXL (12)	blue	1H79.1	1 pair	3.612,90	3.070,15



**NEW / +**

**Workplace mat Notrax 526 Sani-Flex**

JUSTRITE. Material: nitrile rubber 100%. Individual place mat made of nitrile rubber. Anti-fatigue mat specially developed for the food industry.

- Very hard-wearing and durable
- Comfortable and high-quality
- Excellent anti-fatigue properties
- Slip-resistant textured surface
- Flattened edging
- High oil and grease resistance
- Suitable for wet, dry and greasy environments

**Applications**

Food industry, professional kitchens, cooking lines, food preparation, cleaning areas

W x L (cm)	Thickness (mm)	Colour	Art. No.	Pack Qty.	DKK	DKK
46 x 61	12.7	blue	24XE.1	1 unit	547,50	465,00
61 x 91	12.7	blue	24XH.1	1 unit	991,50	842,25



**Waste disposal containers WIVA container**

Mauser. Material: PP, rubber seals. For collecting non-liquid waste from laboratories and clinics. Tapered container with a carrying handle on each side and a yellow click lid in the same material with rubber seal. The lid cannot be taken off again after the final close. The container and lid are both completely metal-free and can therefore be incinerated with no residue. Labelled with a UN 3291 sticker.

Vol. (l)	L x W x H (mm)	Weight (kg)	UN approval	Art. No.	Pack Qty.	DKK	DKK
30	404 x 334 x 315	1.05	1H2/Y15/S	A854.1	1 unit	142,50	113,65
60	404 x 335 x 646	1.65	1H2/Y15/S	1066.1	1 unit	163,50	130,50



**-20%**

**Safety vest**

Allflash Produktion + Vertriebs GmbH. Material: polyester 100%. Acc. to EN ISO 20471:2013, class 2 (size S acc. to EN 1150). With double Velcro fasteners for variable size fitting.

**Use:** for improved recognition of persons in traffic and handling zones, or as equipment for company vehicles.

**Two reflective strips and strips over the shoulders**

Size	Colour	Art. No.	Pack Qty.	DKK	DKK
M-XL	orange	EHP4.1	1 unit	51,75	40,90
M-XL	yellow	EHP5.1	1 unit	51,75	40,90



**Folding tray 30 l**

Cemo. Made of PVC and with built-in reinforcement plates, the folding collecting tray can be transported in any vehicle thanks to its flat design. Absolutely impervious to liquid; leaking chemicals or oils are collected safely.

- Requires little space, only 2.5 cm high when folded
- Quick assembly with Velcro fasteners
- Resistant to many chemicals and oils
- It is ideally suited for transporting hazardous materials and for use on construction, agricultural and forestry machines

Vol. (l)	L x W x H (cm)	Weight (kg)	Art. No.	Pack Qty.	DKK	DKK
30	60 x 40 x 25	1,2	KAN0.1	1 unit	868,50	694,50



**-25%**

**First-aid kit mobile**

Söhngen. Material: ABS Plastic.

All-round rubber seal protects against dust and splash water. Cases can be sealed. Wall mount with 90° stop lock allows the case to be opened and the contents to be removed when it is mounted on the wall.

Version	L x W x H (mm)	Art. No.	Pack Qty.	DKK	DKK
Contents acc. to DIN 13157	260 x 110 x 170	0598.1	1 unit	796,15	529,15
Contents acc. to DIN 13169	400 x 150 x 300	1721.1	1 unit	1.604,65	1.203,00

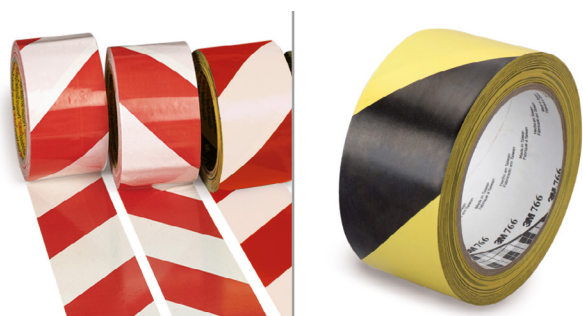


**-30%**

**Signal tape**

3M. Material: PVC Film.

Self-adhesive, abrasion resistant adhesive hazard warning tape for indoor use. Extremely stretchy and very supple, even on uneven surfaces. Ideal for marking hazards, bundling, holding and sealing.



Colour	W x L	Art. No.	Pack Qty.	DKK	DKK
red/white	50 mm x 33 m	0744.2	1 roll	205,15	142,90
yellow/black	50 mm x 33 m	NK94.1	1 roll	205,15	142,90





**-30%**



**S**

**Eye wash bottle Actiomedic® Sodium chloride solution**

GRAMM medical healthcare. Sterile.

Acc. to EN 15154-4. Eye wash bottle, with 0.9% sterile sodium chloride solution, for washing foreign particles, e.g. wood and metal splinters, dust, dirt.

- Ready-to-use
- Eye wash bottle with ergonomically designed spray head and dust cap
- For mobile use and for refilling eye wash stations and first-aid cases

**Note:** disposable eye wash bottles acc. to DIN EN 15154-4 may only be used in addition to existing eye shower units acc. to DIN EN 15154-2 if no running potable water or water of equivalent quality is available.

Medical device class I MDD.

Rinsing solution	Vol. (ml)	Art. No.	Pack Qty.	DKK	DKK
NaCl 0.9%	250	1K10.1	1 unit	109,15	69,75
NaCl 0.9%	500	1K11.1	1 unit	152,25	105,40

Phone

+49 721 / 56 06 510 · info@carlroth.com

